

Facilities & Maintenance, Operations, & Transportation Update

June 24, 2025





Agenda

- **Maintenance, Operations, & Transportation Annual Update**
- **Deferred Maintenance Summer Projects**
- **Facilities Measure K Projects**
- **Solar Update**
- **Pace Early Education Site Modernization**

Maintenance, Operations, & Transportation Cares

Our Why

We don't educate students through teaching;
we do so through physical environments and
transportation services we provide



Deferred Maintenance Projects

Lewis Elementary

Roof Replacement

Cafeteria, B wing, C wing, D wing

Roof Coating/Restoration

A wing, K1, K2, E wing, portables east of the C wing, breezeways



Deferred Maintenance Projects

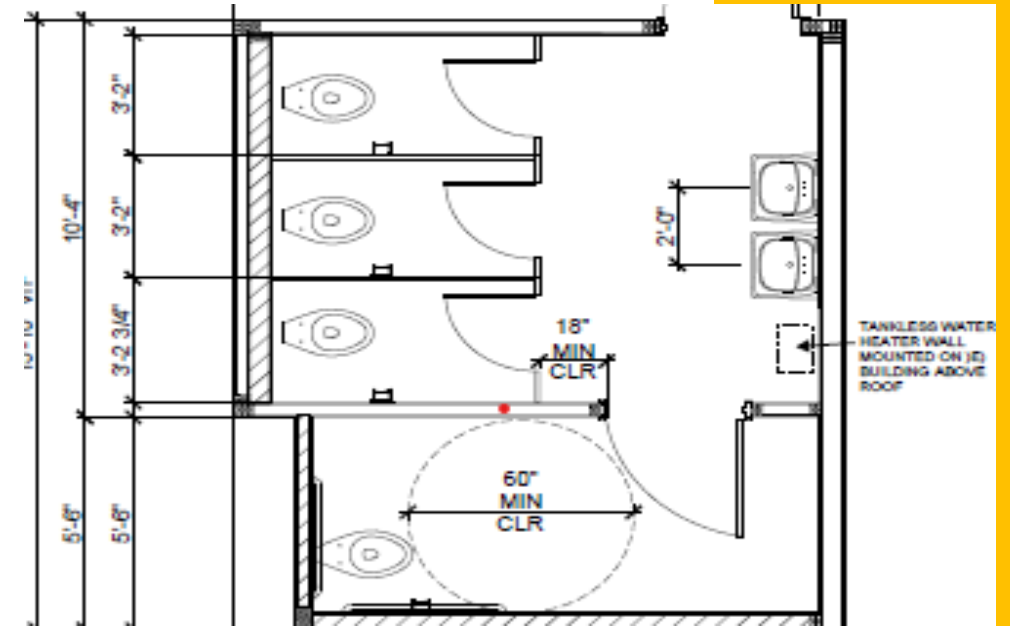
Elementary Schools

Gallatin ES – Start date July 1

Restroom renovation

Old River School – Start date July 1

- Addition of 2 bays of swings to the current play area
- Solar reflective asphalt in play area where Stauffer interim housing portables were



Deferred Maintenance Projects

Middle Schools

Griffiths MS - Start Date July 1

Concrete and drainage work in the quad near the stage

Stauffer MS – June 16

New turf at the front of the school to replace DG

Sussman – July 1

New asphalt in the 6th grade eating area



Deferred Maintenance Projects

High Schools

Downey HS

- Track replacement - Start date June 4
- Dance room floor replacement - Start date June 9

Warren HS - Start Date July 1

Protective netting between the baseball and softball fields

Columbus HS/Downey Adult School – Start date June 16

G building restroom remodel

All Sites - Start Date July 23

Beautification on various planters throughout the sites



Deferred Maintenance Projects

Concrete grinding to prevent trip hazards

Doty - 39 hazards

Griffiths - 16 hazards

Stauffer - 7 hazards

Alameda - 5 hazards

Carpenter - 12 hazards

Old River School – 9 hazards

Price - 23 hazards

Rio Hondo – 17 hazards

Rio San Gabriel – 14 hazards

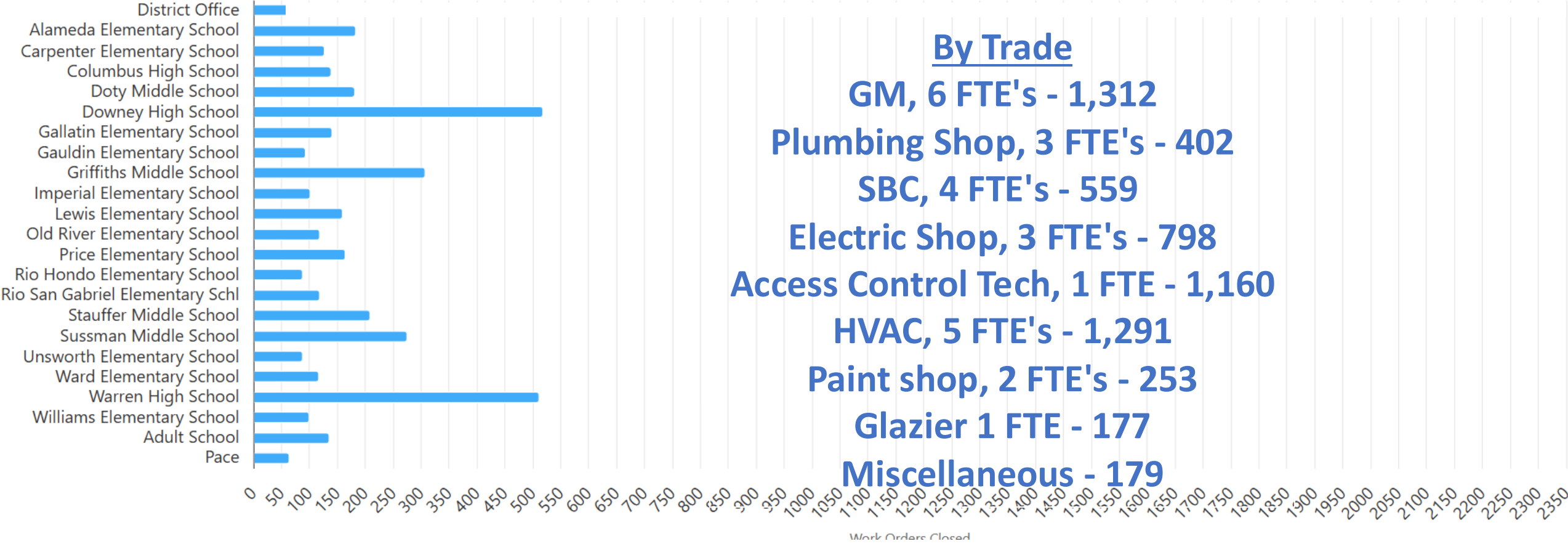
Ward - 5 hazards

Williams - 11 hazards



Work Orders Closed by Site From: 07/01/2024 To 06/03/2025

Total Work Orders Closed: 6131



Operations Department – Sussman Grass Restoration



Operations Department – Warren HS Field Restoration





Transportation
279,631 miles driven





Measure K Projects



Two Tracks – Modernization & New Construction

Start with

Modernization

Garcia ES & Rio Hondo ES

Start with

New Construction

(TK/K Villages)

Rio San Gabriel ES & Carpenter ES



Two Tracks – Modernization & New Construction

Modernization

Garcia ES & Rio Hondo ES



New Construction (TK/K Villages)

Garcia ES (formally Imperial ES) & Rio Hondo ES

New Construction (TK/K Villages)

Rio San Gabriel ES & Carpenter ES

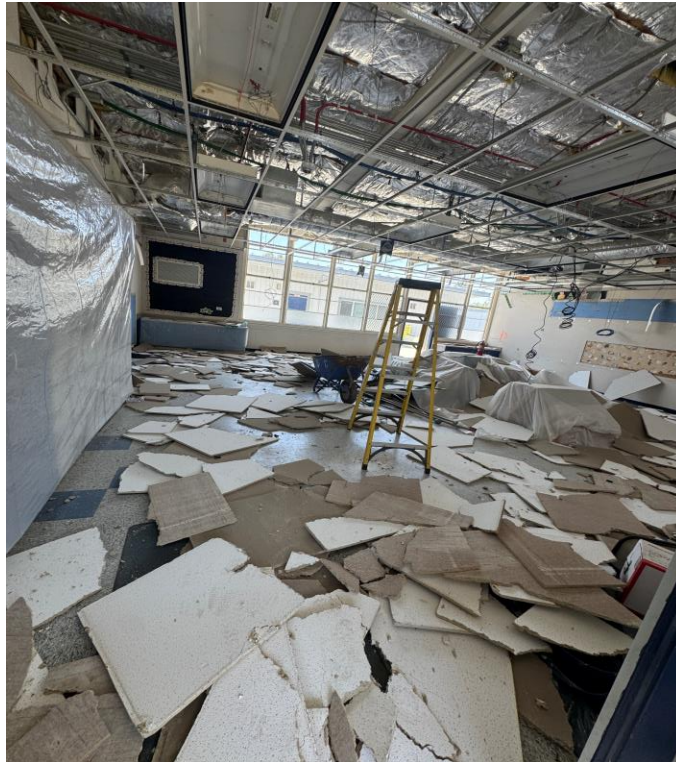


Modernization

Rio San Gabriel ES & Carpenter ES

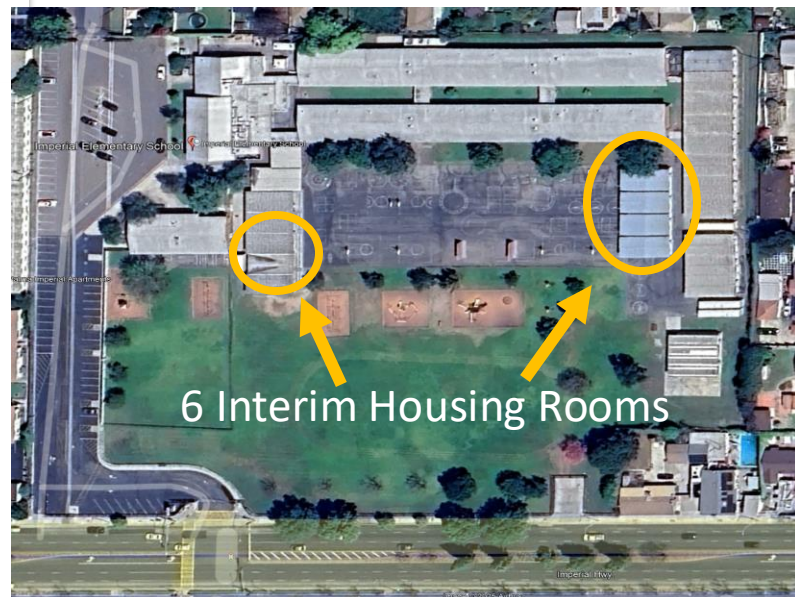


Rio Hondo Elementary School - Modernization










Garcia Elementary School - Modernization





Carpenter Elementary School – New Construction

-  New asphalt
-  Reworked fence line
-  Relocated play equipment & swings
-  Cleaned up area where play equipment was removed
-  Temp fencing





Carpenter Elementary School – New Construction

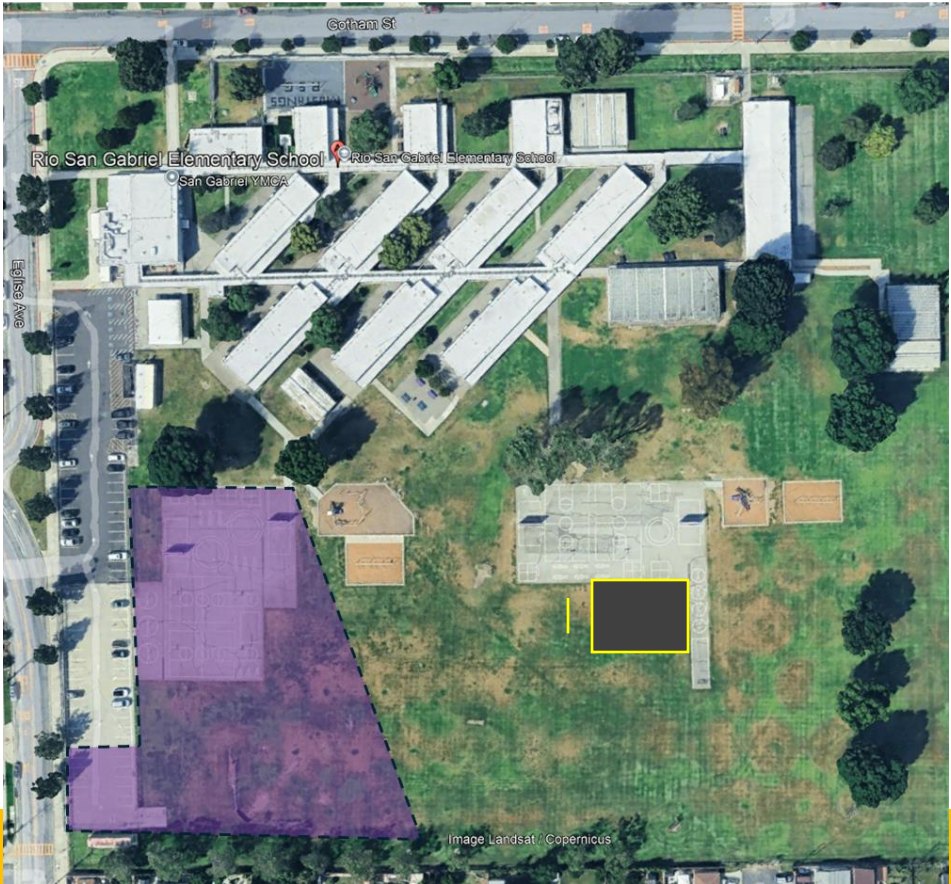
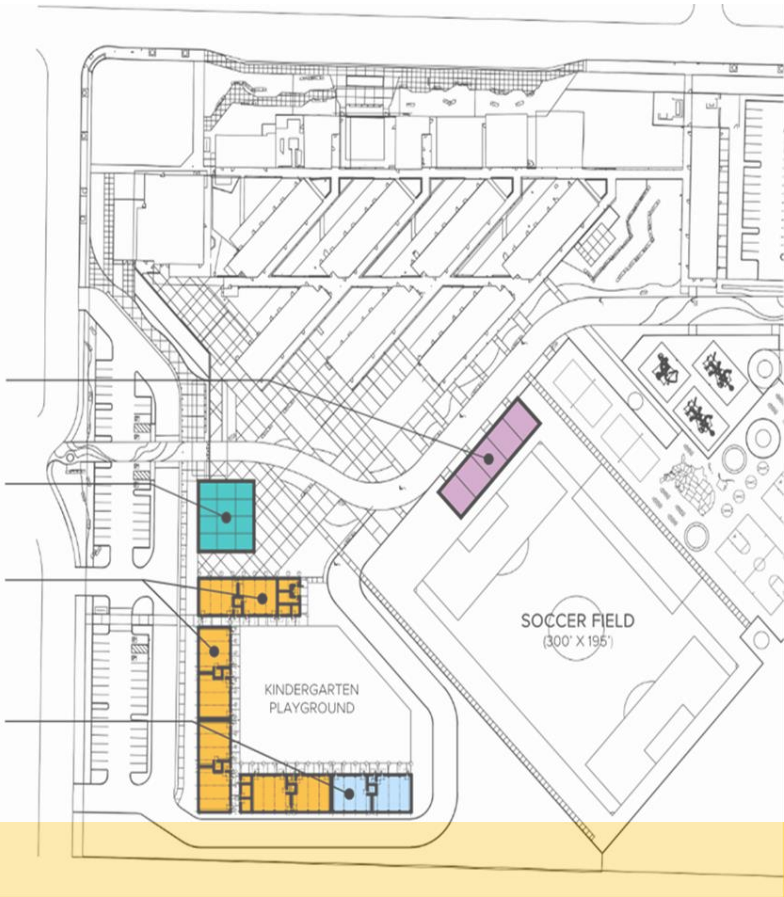
New Building Construction Timeline

- Temp Fencing for New Classroom Area – Week of July 28
- Demo for Existing Playground Activities – Week of August 7
- Waiting on DSA approval for Contractor to Start Work – Late Fall 2025





Rio San Gabriel Elementary School – New Construction



New temp asphalt

Temp volleyball





Rio San Gabriel Elementary School – New Construction

New TK/K Village Building Construction Timeline

- Temp Fencing for TK/K Village Area – Week of July 21
- Waiting on DSA approval to issue RFP for contractor
- Tentative Construction Start Early Fall 2025





Facilities Master Plan Update

- TK/K Villages, enrollment projections, and Proposition 2
- Next Steps – Board direction on site prioritization moving forward in Fall



Solar Update

Solar Update

Phase

1

Structure Complete, Awaiting Electrical:

Columbus HS, District Office, Downey HS, Stauffer MS, Griffiths MS, Sussman MS, & Doty MS

Remaining: Warren HS

Phase

2

Construction Start: March 2025

Sequencing: Lewis, Ward, Price, Williams, Gauldin, Alameda, Gallatin, Pace, Carpenter, Imperial, Rio Hondo, Rio San Gabriel, Unsworth



Elementary School Solar Structures

Williams Elementary



Lewis Elementary





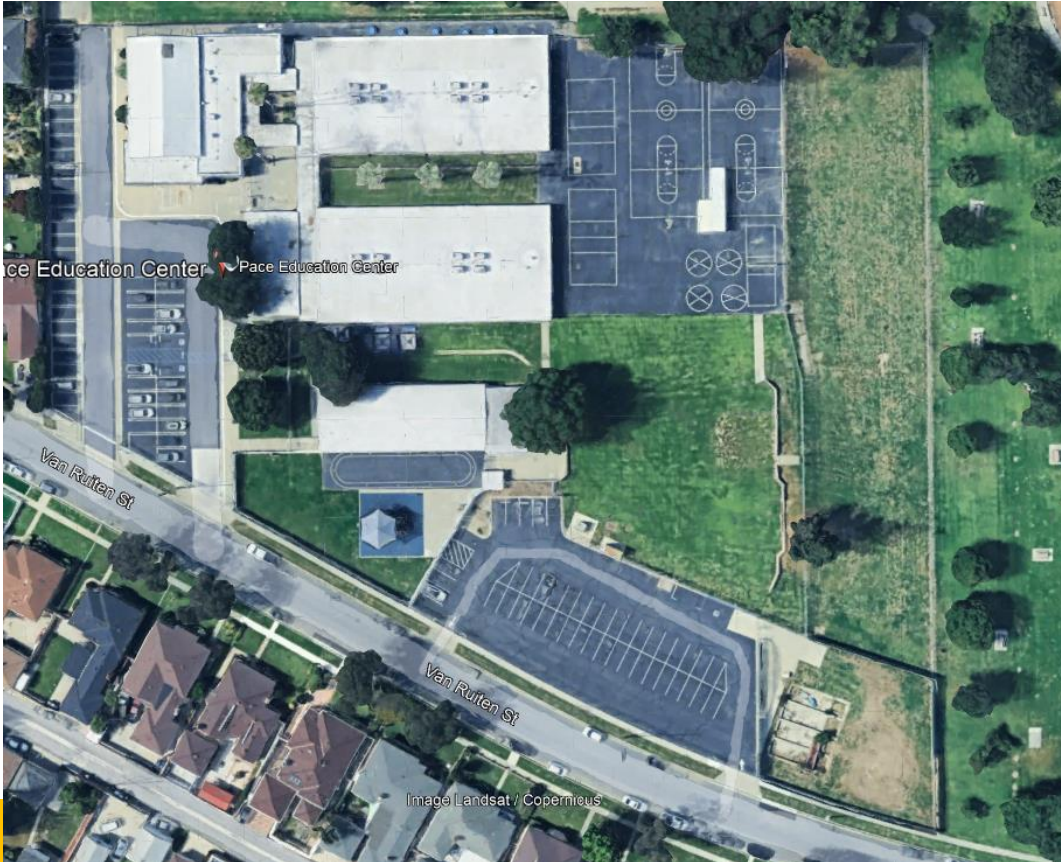
Pace Early Education

Site Modernization

**Fund: Early Intervention
Preschool Grant (EIPG)**



Pace Early Education – Phase 1 Setup Interim Housing





Pace Early Education – Phase 1 Setup Support Staff* Portables



Unused area between Pace campus and park

*DEA, Nurses, Occupational Therapists, SELPA, Vision Specialists, Orientation and Mobility Specialists



Pace Early Education – Phase 1 Setup Support Staff Portables



Relocate Stauffer portables and
Prep site for new portables



Pace Early Education – Phase 1 Setup Support Staff Portables



Set 8 new portable spaces with
restroom portable
And move support staff in

Separate entrance for portable staff

Build new parking lot area



Pace Early Education – Phase 2 Pace Campus Modernization





Pace Education Center

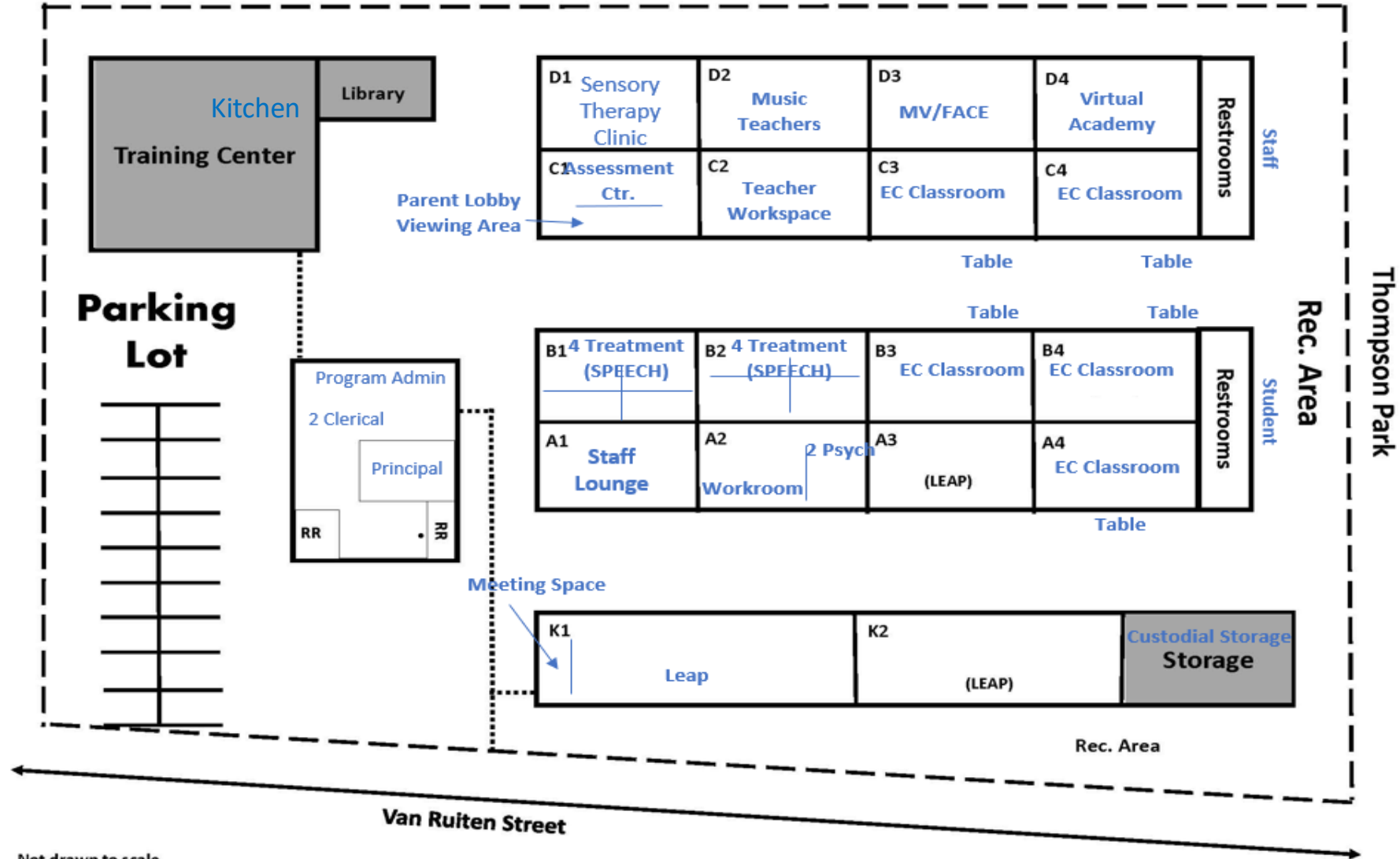
9625 Van Ruiten St

Phone: (562) 904-3571

Bellflower, CA 90706

Fax: (562) 469-7170

Thompson Park



Not drawn to scale



Pace Early Education - Phase 2 Exterior Improvements





Pace Early Education - Phase 2 Exterior Improvements





Pace Early Education - Phase 2 Exterior Improvements



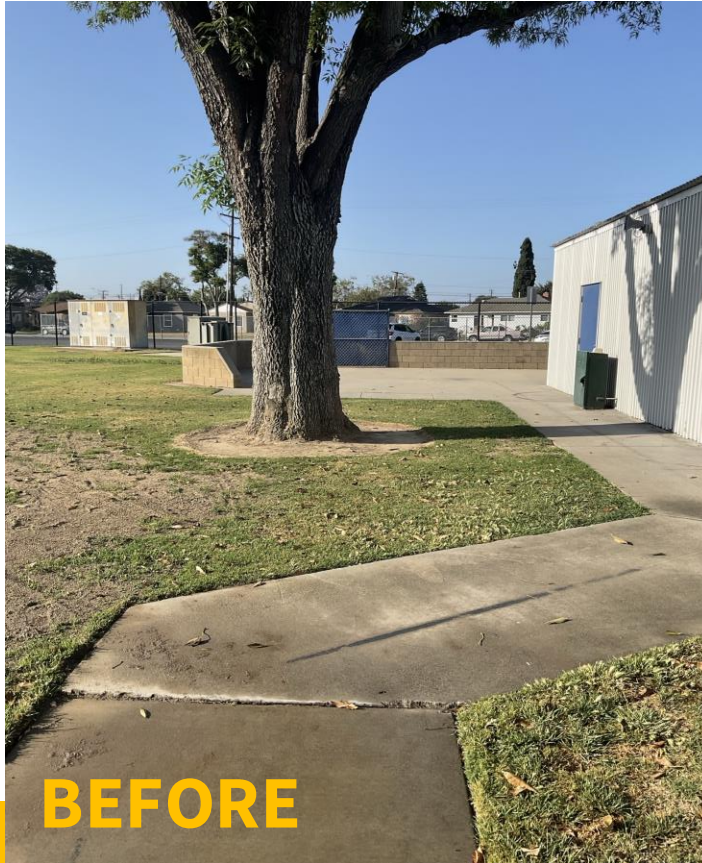


Pace Early Education - Phase 2 Exterior Improvements





Pace Early Education - Phase 2 Exterior Improvements





Pace Early Education - Phase 2 Exterior Improvements



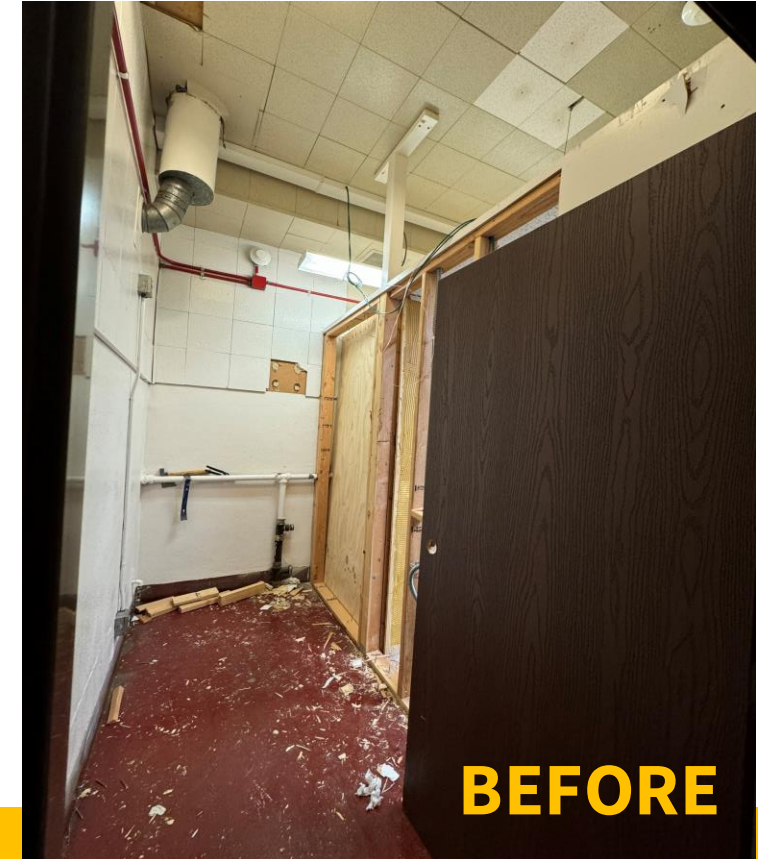


Pace Early Education - Phase 2 Exterior Improvements



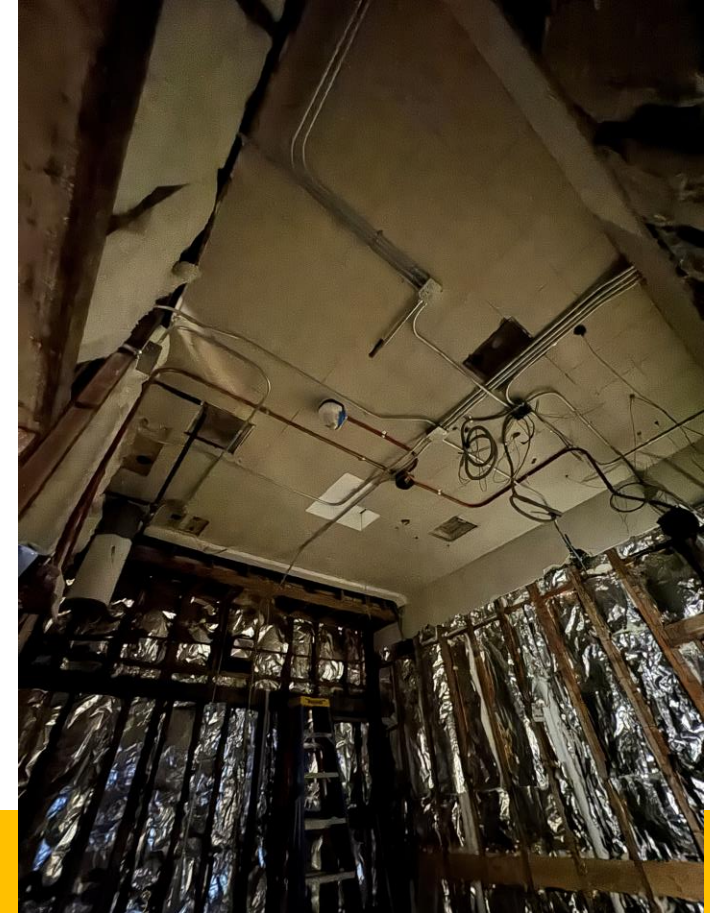


Pace Early Education – Phase 2 Kitchen Modernization





Pace Early Education – Phase 2 Kitchen Modernization





Pace Early Education – Phase 2 Kitchen Modernization





Pace Early Education – Phase 2 Kitchen Modernization



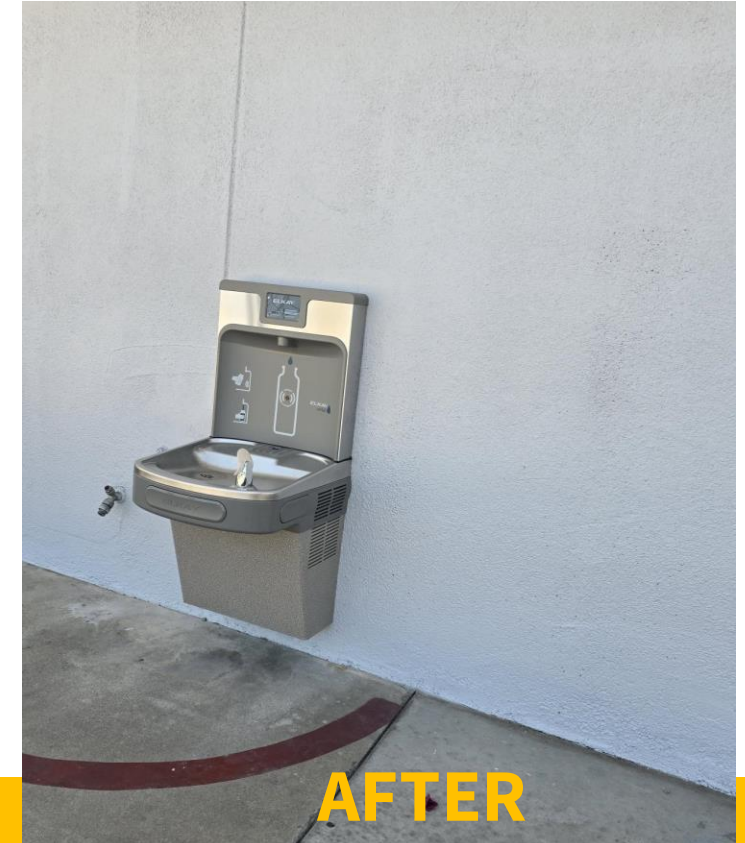
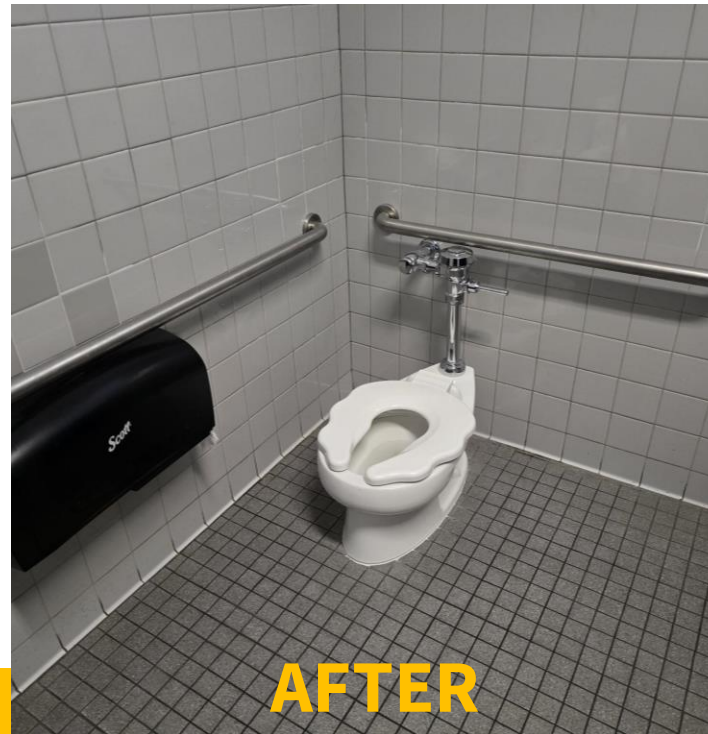


Pace Early Education – Phase 2 Restroom & Water Fountain Renovation





Pace Early Education – Phase 2 Restroom & Water Fountain Renovation





Pace Early Education – Phase 2 Classroom Modernization

Program Administrator's Office





Pace Early Education – Phase 2 Classroom Modernization

Typical Classroom





Pace Early Education – Phase 2 Classroom Modernization

Assessment Room



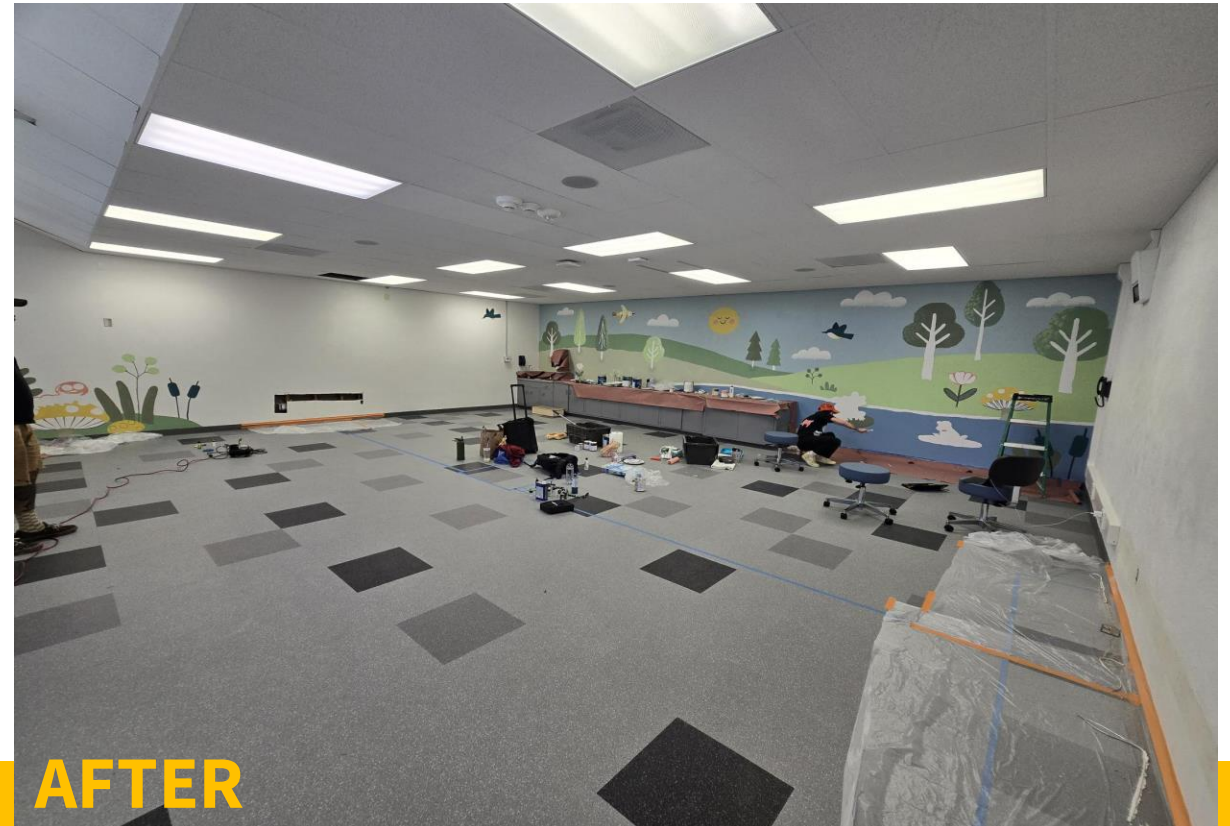


Pace Early Education – Phase 2 Classroom Modernization

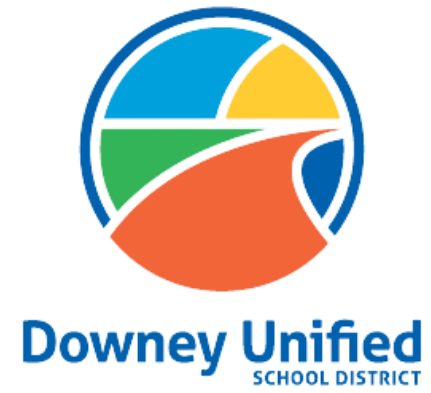
Sensory Therapy Room



BEFORE



AFTER



THANK YOU!