

# Community Schools

**Board Presentation June 2024**



**Downey Unified**  
SCHOOL DISTRICT

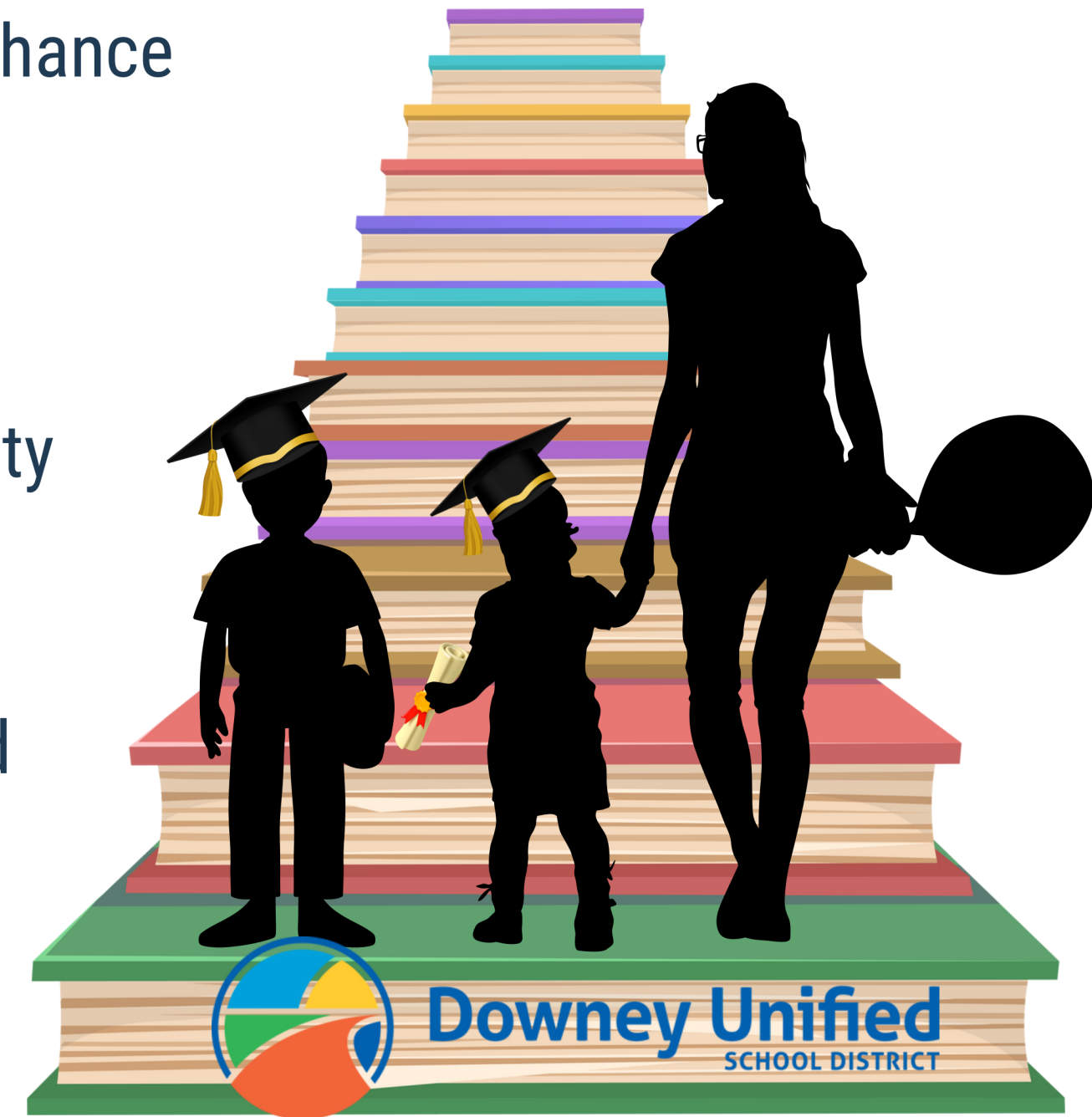
# What is a Community School?

Holistic: Whole Child School Improvement strategy intended to enhance cooperation of teachers, students and families

Integrated: Delivers an integrated focus on academics, health and social services, youth and community development, and community engagement

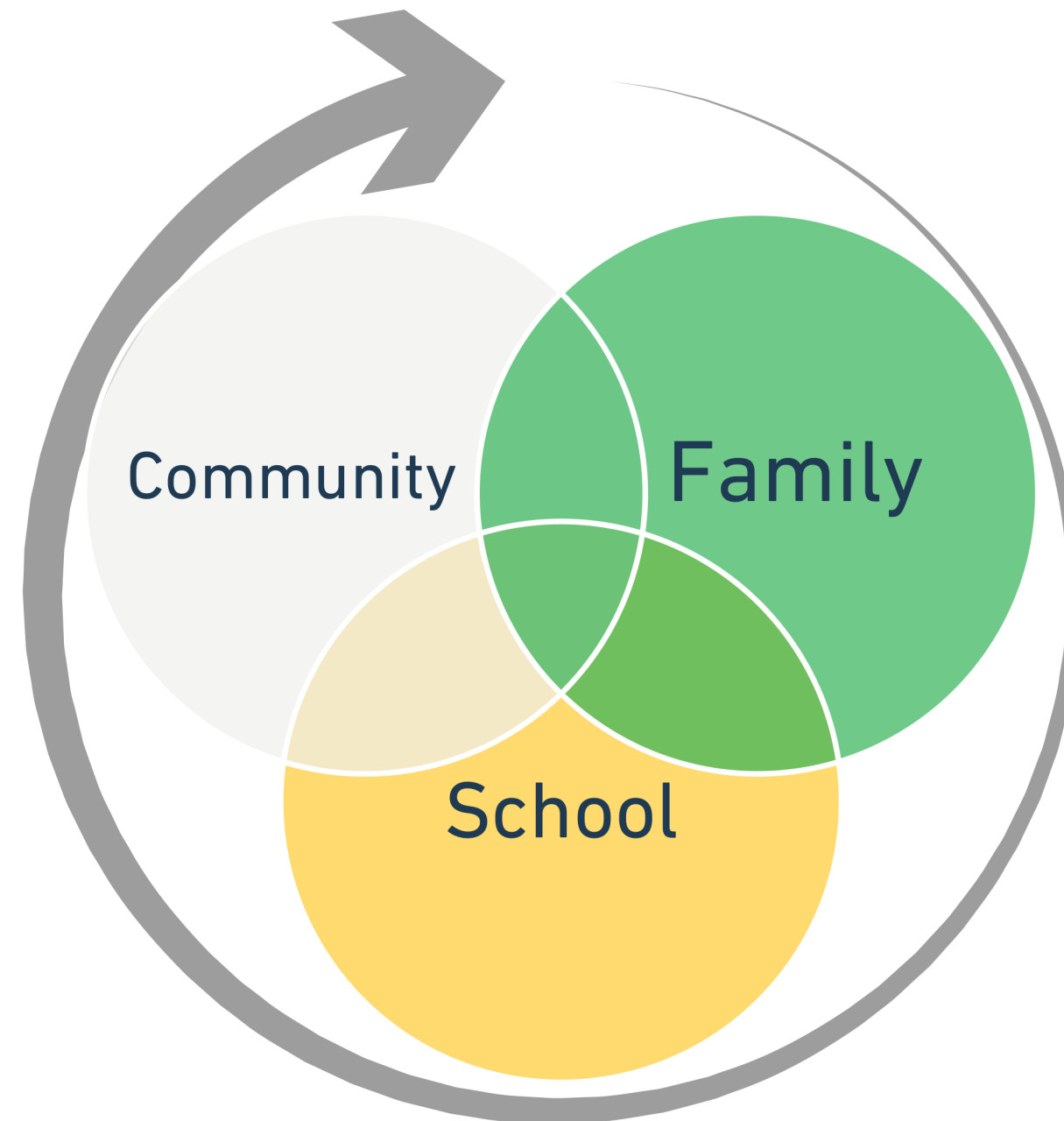
Collaborative: Includes external partners and agencies (public and private) to align resources and supports

Equity Focused: Prioritizes school communities where social and economic barriers are prevalent



# Holistic Approach

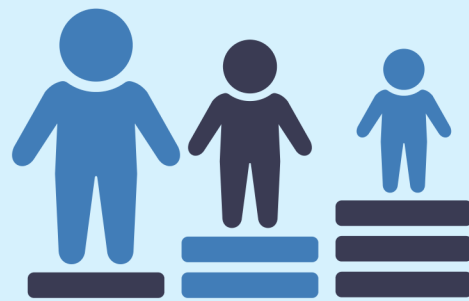
Community schools prioritize a holistic approach to education, integrating various supports and opportunities for students, families, and communities. All offerings, services and supports housed in the school or near the school.



# Community Schools Priorities



High-Quality Instruction & Supportive Learning Environment  
Physical & Mental Health Services  
Parent/Family Involvement & Engagement



Equity & Inclusion  
Culturally Relevant Education & Reducing Barriers  
Teacher Training (PD) & Staff Collaboration



Community Partnerships  
After-School Programs & Summer Learning  
Social Emotional Learning, Character Education & Conflict Resolution





# Road to Implementation

## September 2022

- Initial Meeting with Principals

## May 2023

- Community Schools Planning Grant **Awarded**

## August - February 2023

- Professional Learning, Site visits,
- Teacher/Parent/Community Presentations,
- Coffee with Principals, School Site Council Presentations,
- Instructional leadership Meetings, PTA meetings,
- Co-Admin Meeting presentation, Steering Committee Growth,
- Data Collection
- **Submitted Implementation Grant Application**

## October - December 2022

- Planning Committee Meetings held,
- Focus Groups Held-Mental Health,/MTSS, Early Childhood,
- Family Engagement, School Climate, PBIS, & Basic Needs
- **Submitted Community Schools Planning Grant**

## July 2023

**Program Administrator hired**

## May 2024

- Community Schools Implementation Grant **Awarded \$13,775,000 Million for 5 years**



# Eligibility & Qualified Sites

◆ 9 Schools

◆ 5,157 Students

◆ 23% of the entire enrollment

Average Unduplicated Pupil Count 76%



Alameda



Gauldin



Imperial



Old River



Ward



Williams



Stauffer



Sussman



Columbus/Woodruff

# Award



**Total Implementation Grant**  
\$13,775,000



**Over 5 years**  
\$2,755,000



**33% Match**  
\$909,150

\*In-kind match by cooperating organizations, staff benefits,  
facility space, and management salary

## Key Requirements

**Community Schools Site Liaisons**

**Professional Development and Implementation of the Community Schools Framework**

**Effective Practices, Services, and Supports at each of the funded sites**

**Track Data and Complete Reports**

# Model for Expansion & Continuum of Care



**Continuous Asset Mapping &  
Gap Analysis**  
(85-90% participation of families)



**Site based & District  
Advisory Councils**



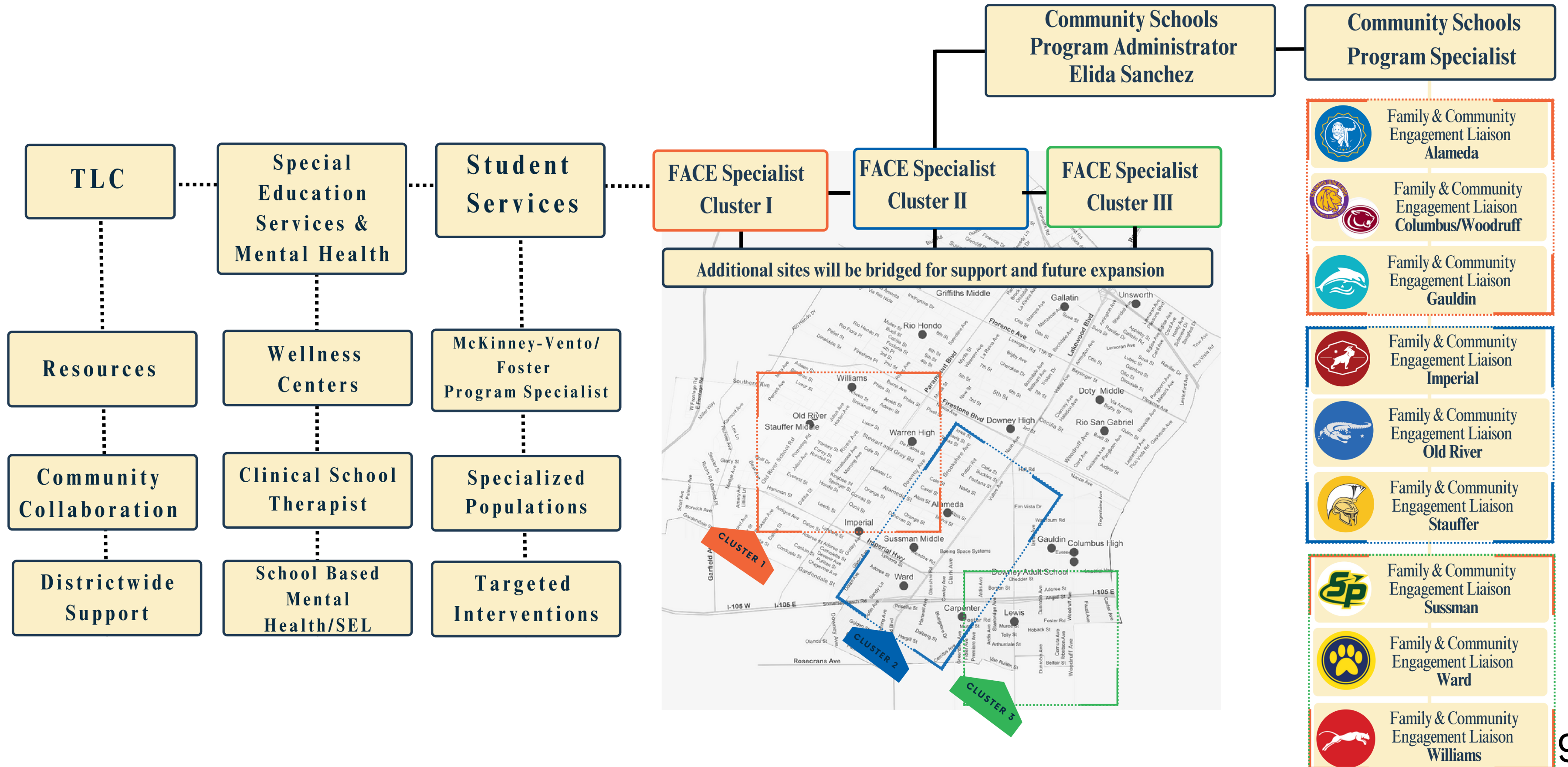
**Integrating & Aligning with  
other Relevant Programs**

**Community School  
Program Specialist**

**Family & Community  
Engagement Specialist**

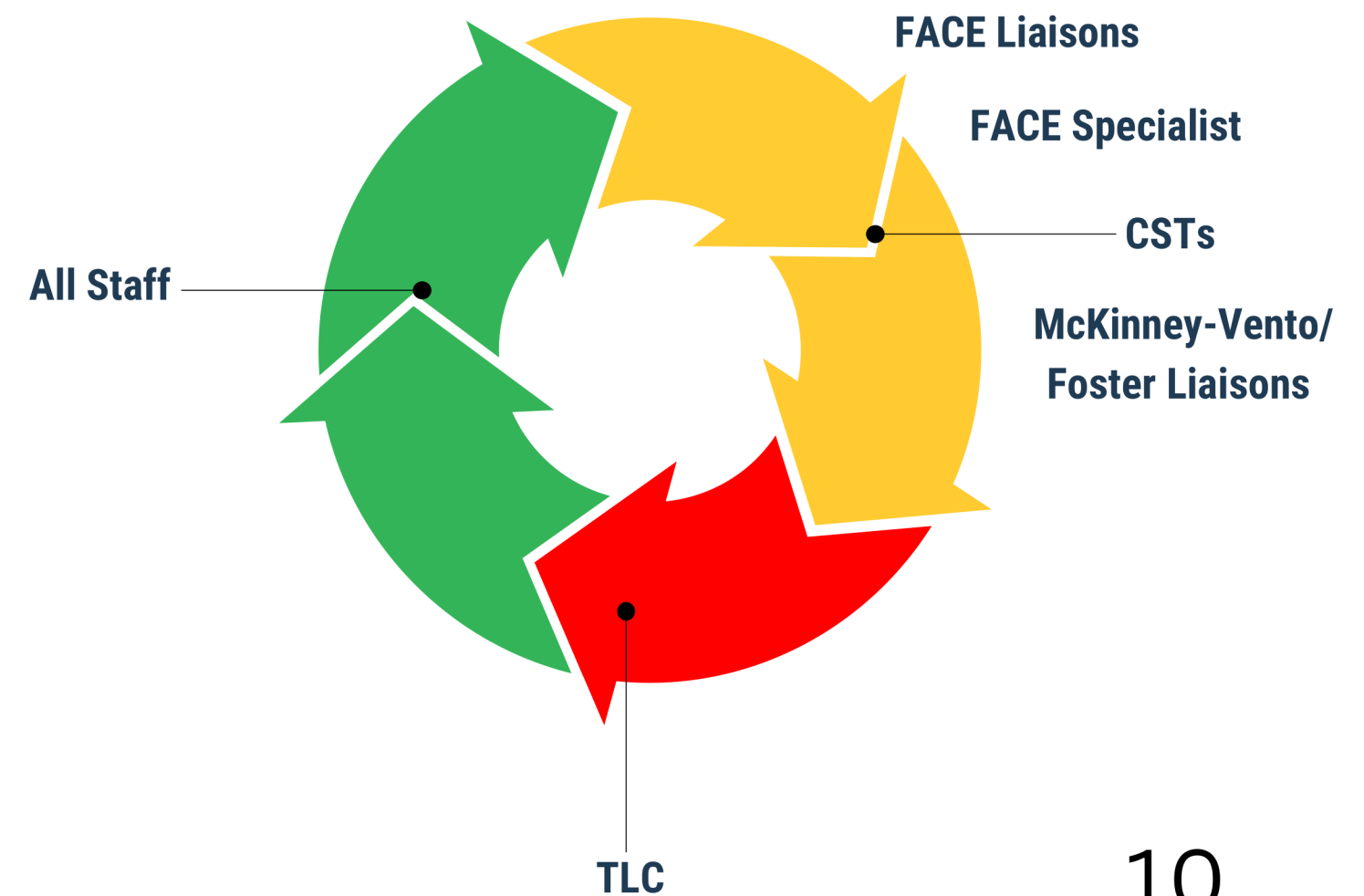
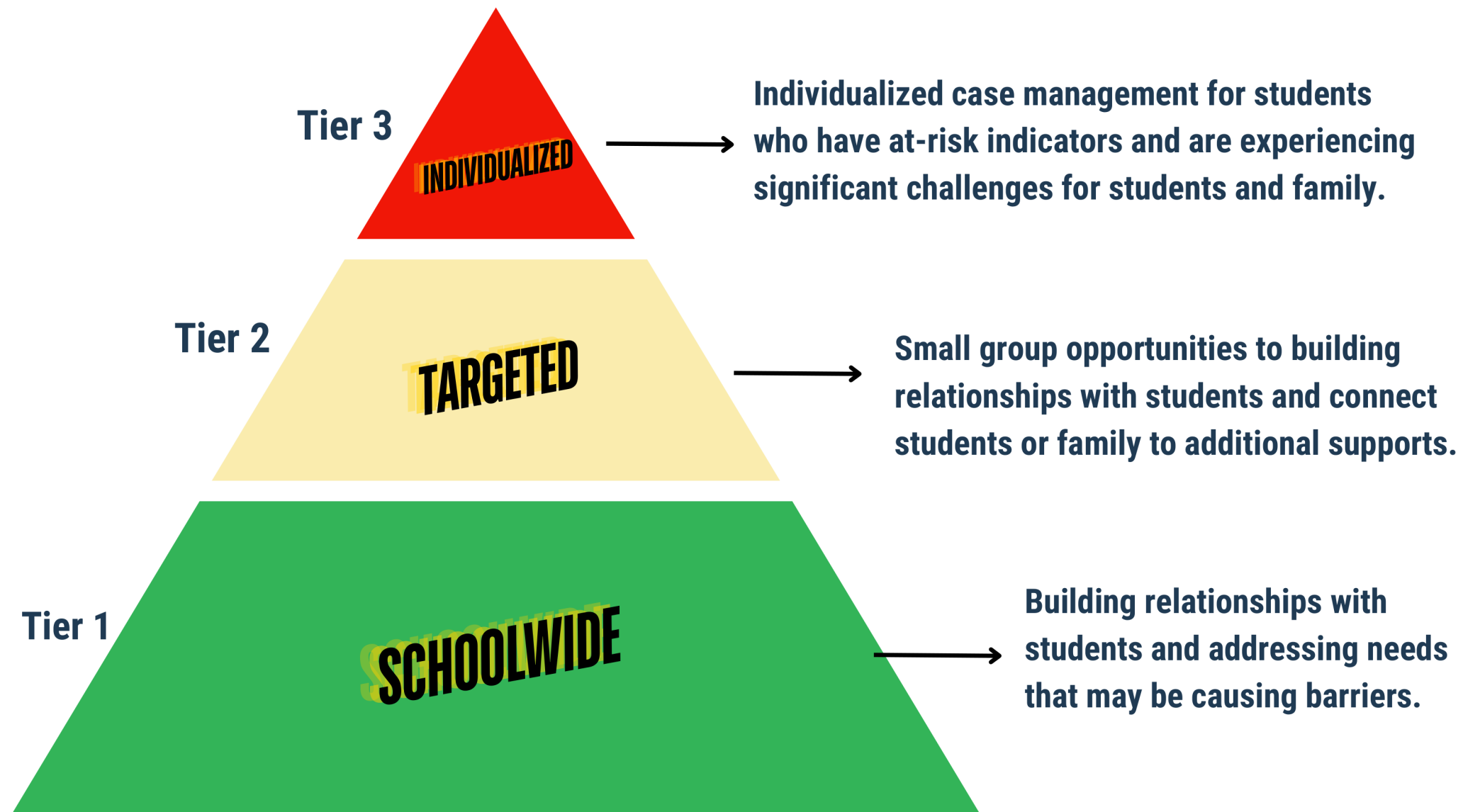
**Family & Community  
Engagement Liaison**

# Districtwide Supports & Service Expansion





# Tier Approach & Coordination of Services/Supports



**Monitor:**

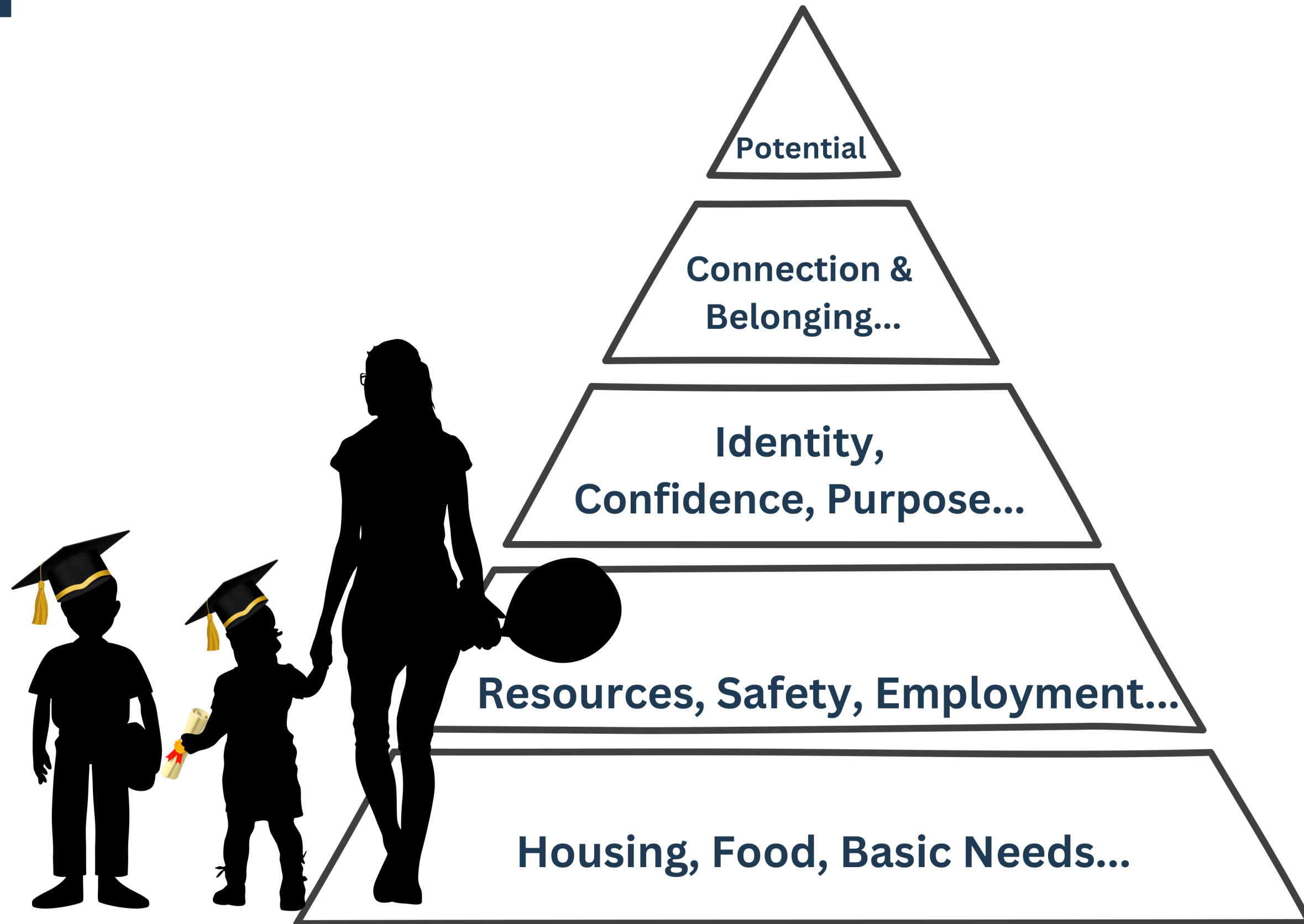
**Attendance**

**School Culture**

**Parent Engagement**

**Academic Achievement**

**Coordination & Support**





# Next Steps...and looking ahead

## June 2024

- Build Infrastructure
- Hire & Train staff
- Capacity Building Training Schedule
- Steering Committee & Network Meetings
- **Submit Annual Program Report-Planning**

## August 2024

- Community Schools Planning Grant **Awarded**
- **Asset Mapping/Needs Assessments**
- Establish Community School Site Councils
- Kick off Event to re-introduce Community Schools at each site

## July 2024

- Capture and Uplift Family & Youth Voice
- **Develop each site Community Center/Hub**
- FACE Specialist will be integrated into each cluster
- Hire Program Specialist

## 2024-2025

- Establish Community School Site Advisory Council (all funded sites)
- Explore a District and Community Platform for referrals and data collection
- Identify potential Community Hubs and Parent and Family Resource Centers
- Develop a tiered systems approach for family engagement opportunities and services
- **Apply for Cohort 4-the rest of the schools that meet NEW eligibility criteria**



# THANK YOU



If you have any further questions or would like to explore opportunities to work together, please don't hesitate to reach out.

**Elida Sanchez, Program Administrator**

**elsanchez@dusd.net | 562-469-6680**