



# Measure O Update



**STAUFFER**

— MIDDLE SCHOOL —

DUSD



# Stauffer Middle School Gymnasium







# Stauffer Middle School Gymnasium







# Stauffer Middle School Two-Story







# Stauffer Middle School Two-Story







# Last of Measure O Activities

Doty, Griffiths, Sussman MS Lunch Shelters



Doty & Sussman MS Food Science





# State Funding Review



# Facilities Funding

**Downey Unified School District**

June 13, 2023

Presented by:

**Jamie King-Iseman**

President/CEO

**April Thompson**

Senior Funding Associate



# Downey USD Participation in the State School Facility Program

SUM of State Funding Site	Year															
	1999	2002	2004	2005	2006	2007	2008	2011	2012	2013	2019	2020	2021	2022	Grand Total	
Alameda Elementary		\$4,436,230			\$2,018,088											\$6,454,318
Carpenter Elementary	\$1,145,304															\$1,145,304
Doty Middle (aka East Middle)		\$3,076,172														\$3,076,172
Downey High				\$3,596,387	\$23,447,763			\$2,331,350	\$20,355,024		\$6,138,875		\$1,533,515			\$57,402,914
Gallatin Elementary	\$1,278,821															\$1,278,821
Gauldin Elementary	\$1,269,769												\$2,256,924			\$3,526,693
Griffiths Middle	\$2,508,433															\$2,508,433
Imperial Elementary		\$1,272,666														\$1,272,666
Lewis					\$3,084,267	\$3,124,849										\$6,209,116
Price Elementary	\$1,211,837															\$1,211,837
Rio Hondo Elementary		\$1,747,374											\$639,423			\$2,386,797
Rio San Gabriel Elementary		\$1,797,842														\$1,797,842
Stauffer Middle		\$2,867,677										\$6,491,697				\$9,359,374
Sussman (edward A.) Middle (aka South Middle)	\$3,005,667															\$3,005,667
Unsworth Elementary					\$3,852,213											\$3,852,213
Ward Elementary		\$1,817,869														\$1,817,869
Warren High			\$3,477,987		\$6,897,815	\$12,427,213	\$4,002,766	\$13,536,955			\$221,014	\$11,239,414				\$51,803,164
Williams Elementary		\$1,495,752														\$1,495,752
<b>Grand Total</b>	<b>\$10,419,831</b>	<b>\$15,197,961</b>	<b>\$3,313,621</b>	<b>\$7,074,374</b>	<b>\$32,402,331</b>	<b>\$10,022,664</b>	<b>\$12,427,213</b>	<b>\$4,002,766</b>	<b>\$15,868,305</b>	<b>\$20,355,024</b>	<b>\$221,014</b>	<b>\$23,869,986</b>	<b>\$2,896,347</b>	<b>\$1,533,515</b>	<b>\$159,604,952</b>	

# Current Applications on Workload

	Fiscal Year				Funding Potential
Funding Program	2023-24	2024-25	2025-26	Total	
Modernization	\$17,793,016	\$4,625,912	\$467,316	\$22,886,244	High
New Construction	\$0	\$19,678,212	\$0	\$19,678,212	Medium
New Construction MEF	\$0	\$18,162,134		\$18,162,134	Medium
Total	\$17,793,016	\$42,466,258	\$467,316	\$60,726,590	

The District is currently in line for projects completed at all **four middle schools and one elementary school**.

These applications will be **processed and funded over the next three fiscal years**.



# Future State Funding Outlook

**Governor's Budget 2021-2022 Fiscal Year: \$1.3B** appropriated from the General Fund to the State Allocation Board for new construction and modernization projects.

The Governor's **2021-2022** Budget also included intent language for the following General Fund appropriations:

- **2023-2024: \$2.1B**
  - *May Revise of 2023-2024 State budget reduced this to \$2B*
- **2024-2025: \$875M**

## Future Statewide School Bond - 2024

- AB 247 (Muratsuchi)
- SB 28 (Glazer)

# Future DUSD State Funding

State Funding Eligibility: In Progress

Modernization Eligibility: Return of Grants

Future Funding Applications: In Progress





**Downey Unified**  
SCHOOL DISTRICT

## Questions

Our Kids Deserve  
The *Best*.



# Measure K Update



- Imperial ES – SGH Architects
- Carpenter ES – Westgroup Design
- Rio Hondo ES – Huckabee
- Rio San Gabriel ES – HPI Architecture





# Measure K Update

## Imperial ES – SGH Architects



**AERIAL SITE VIEW EAST**

Fully utilizing the property areas parallel and perpendicular to Imperial Highway, the vehicle capacity for pickup and drop-off has been significantly increased, with available parking accessible to the Administration Office, TK/Kindergarten, and after school activities. Both existing buildings and new additions are woven together to create a secure barrier that surrounds the campus, insulating a sense of safety for parents, staff, and students alike. With dedicated, secure access points established for various grade levels, wait times and congestion in these areas are greatly reduced.

Downey Unified School District | SGH Architects | Page 10

- 1 SINGLE-POINT ENTRY
- 2 EXPANDED LUNCH SHELTER
- 3 SECURE BUILDING BARRIER
- 4 ELEMENTARY DROP-OFF
- 5 REVAMPED MPR AND KITCHEN
- 6 TK/KINDERGARTEN DROP-OFF



# Measure K Update

## Carpenter ES – Westgroup Design



### CARPENTER ES

ALTERNATE CONCEPTUAL PLAN – RENDERED VIEWS



42



AERIAL VIEW OF NEW CLASSROOM BUILDINGS, TK-K PLAY YARD, AND PARKING / DROP-OFF



43





# Measure K Update

## Rio Hondo ES – Huckabee

RFP FOR ARCHITECTURAL SERVICES FOR MEASURE K BOND PROJECTS | DOWNEY USD

CONCEPTUAL DESIGN – RIO HONDO ELEMENTARY SCHOOL



Huckabee  MORE THAN ARCHITECTS





# Measure K Update

## Rio San Gabriel ES – HPI Architecture



1 SOUTHWEST MAIN CAMPUS "FRONT DOOR" VIEW



2 SOUTHWEST AERIAL VIEW



3 NORTHWEST MAIN ENTRY VIEW



# Measure K Update

## RFQPs in process

- Full Land Surveying Services
- Geological Testing/CGS Soils Report
- Hazardous Materials Surveying Services
- Underground Investigation and Mapping

## Next round of RFQPs

- Lab of Record
- Inspector of Record

## Working through CEQA process



# Measure K Update

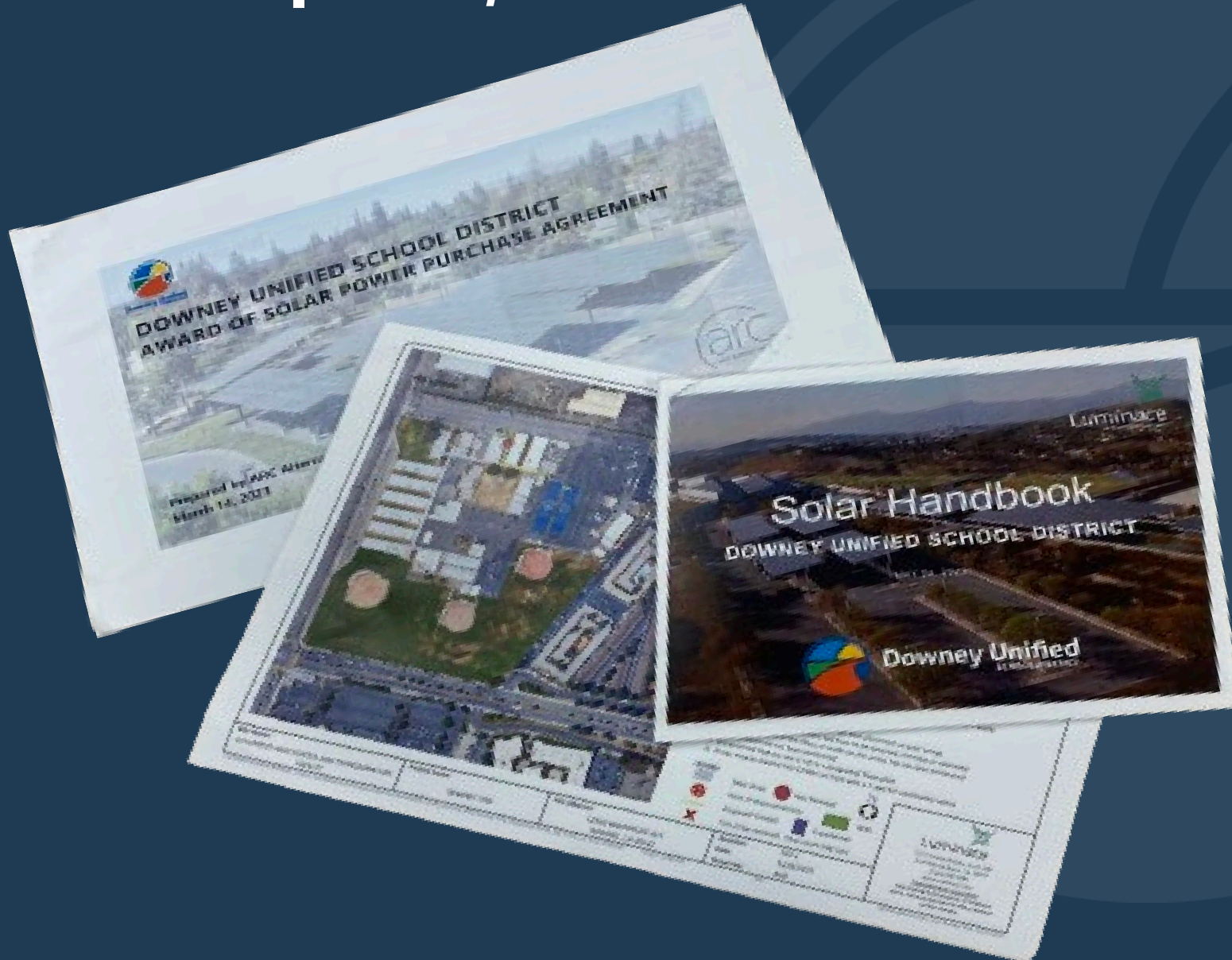
## Schedule of Events RFQP for Lease-Lease Back Contractors

- Prequalification packets from contractors – June 30
- Interviews – week of July 14
- Board review and consideration – August 8 board meeting
  - Pre-construction services
- DSA approval – **estimated** June 2024
- Final GMP board review and consideration – June 2024 board meeting
- Construction start date – Summer 2024
- Construction end date – Fall 2026





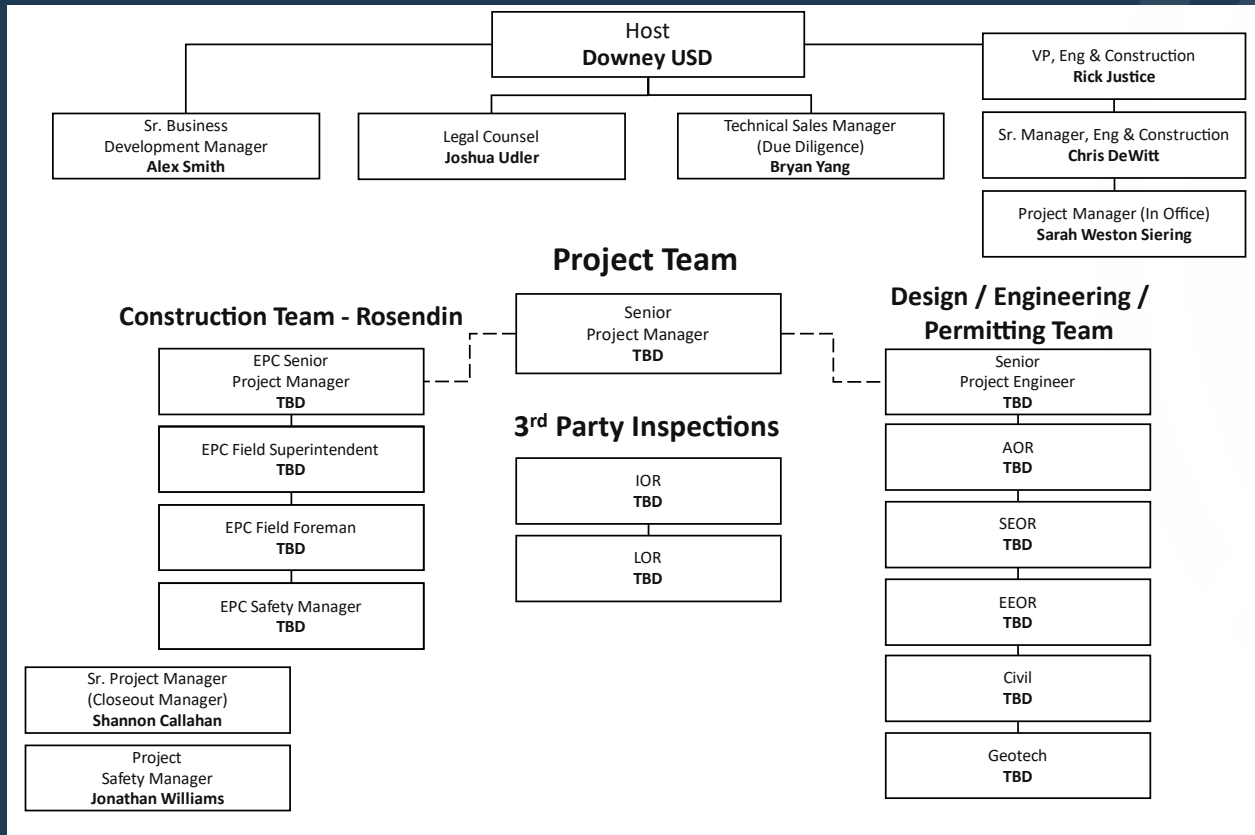
# Solar Update/Future Potential Energy Projects





# Solar Update/Future Potential Energy Projects

## Solar Project Team – Organizational Chart



## Energy Vendor RFQP Process

- Reviewing responses
- Site assessments
- Energy project options
- Save bond dollars



# Deferred Maintenance Projects

- Gallatin ES – Playground Asphalt
- Stauffer MS – Roof Replacement on Breezeway
- Downey HS
  - Campus-Wide Paint Project
  - X Building HVAC Replacement
  - Gym & X Building Roof Replacement
  - Stadium Panel Replacement
- Warren HS
  - Baseball Field Irrigation
  - Football Field Synthetic Turf Replacement
  - Second Floor Admin Building Flooring







# Downey Unified

SCHOOL DISTRICT

**THANK YOU!**

Our Kids Deserve  
The *Best*.