



**Downey Unified**  
SCHOOL DISTRICT

# Facilities Update

**June 7, 2022**

Our Kids Deserve  
The *Best*.



# Agenda

- **Current Bond Projects**
- **Master Plan Update**
- **Current Deferred Maintenance Projects**



# Griffiths Middle School

Project DSA Certified



# GRIFFITHS

— MIDDLE SCHOOL —



# Griffiths Middle School

## Wrap Up Projects

- Increase site parking
- Enhance site concrete
- Design in progress for additional shade structure





# Sussman Middle School

Working Through Certification



# SUSSMAN

— MIDDLE SCHOOL —



# Sussman Middle School Modernization

## Wrap Up Projects

- **Girls Locker Room & small site improvements**
- **Synthetic turf & concrete behind ball fields**
- **Improve landscape & hardscape around the 40's Wing**





# Sussman Middle School Modernization

## Wrap Up Projects

- Design in progress for 3 new shade structures
- Design in progress for Food Science Classroom



Downey HS Food Science Room



# Doty Middle School Modernization

## Working Through Certification



# DOTY KNIGHTS

WENDY LOPOUR DOTY MIDDLE SCHOOL



# Doty Middle School Modernization

## Wrap Up Projects

- Continued work on North Field
- Add additional graphics to 2-Story





# Doty Middle School Modernization

## Wrap Up Projects

- Add Acoustic Sound Panels inside Gymnasium
- Install new bike racks & skateboard Lockers
- Install additional Pedestrian Fencing & Site Bollards





# Doty Middle School Modernization

## Wrap Up Projects

- Design in progress for 3 new shade structures
- Design in progress for Food Science Classroom



**Downey HS Food Science Room**





# Stauffer Middle School

Working Through Phase I Certification



# STAUFFER

— MIDDLE SCHOOL —



# Stauffer Gymnasium Building Phase II



Construction Completion Fall 2022



# Stauffer Gymnasium Building Phase II



Construction Completion Fall 2022



# Stauffer Two Story Classroom Building Phase III



**Construction Has Just Started**



# Completed Measure O Projects

- **Alameda ES: Quick start paving work**
- **Carpenter ES: Quick start fencing, playground equipment replacement, new kindergarten playground**
- **Downey HS: Locker rooms, Marquee sign, field lighting**
- **Gallatin ES: Kindergarten playground upgrades, fencing at front of school around bell**
- **Gauldin ES: Modernization**
- **Griffiths: Marquee sign**
- **Imperial ES: Quick start fencing and paving**
- **Price ES: Quick start paving; modernization design started but construction not started**
- **Old River ES: Marquee, fire alarm replacement**
- **Rio Hondo ES: Marquee, modernization; phase 2 design was put on hold**



# Completed Measure O Projects

- **Rio San Gabriel ES: Quick start fencing completed; modernization designed and DSA approved, but construction not started**
- **Stauffer MS: Phase 1 modernization**
- **Unsworth ES: Quick start fencing and paving completed; modernization designed and DSA approved but construction not started**
- **Ward ES: Modernization design started but put on hold; fire alarm was in design**
- **Warren HS: Locker rooms, aquatics center, field lighting, bear park improvements**
- **Williams ES: Quick start fencing completed; modernization designed and DSA approved, but construction not started**
- **\*Security projects at all sites**



**Downey Unified**  
SCHOOL DISTRICT

# Draft Master Plan Update

Our Kids Deserve  
The *Best*.



# Draft Master Plan Update

- **Our Process**
  - Interview site principal
  - Establish site committees
    - Teachers
    - Office Staff
    - Parent
    - Principal
  - FMP Community Committee
  - Created list of needs
  - Established conceptual design options
    - In draft status



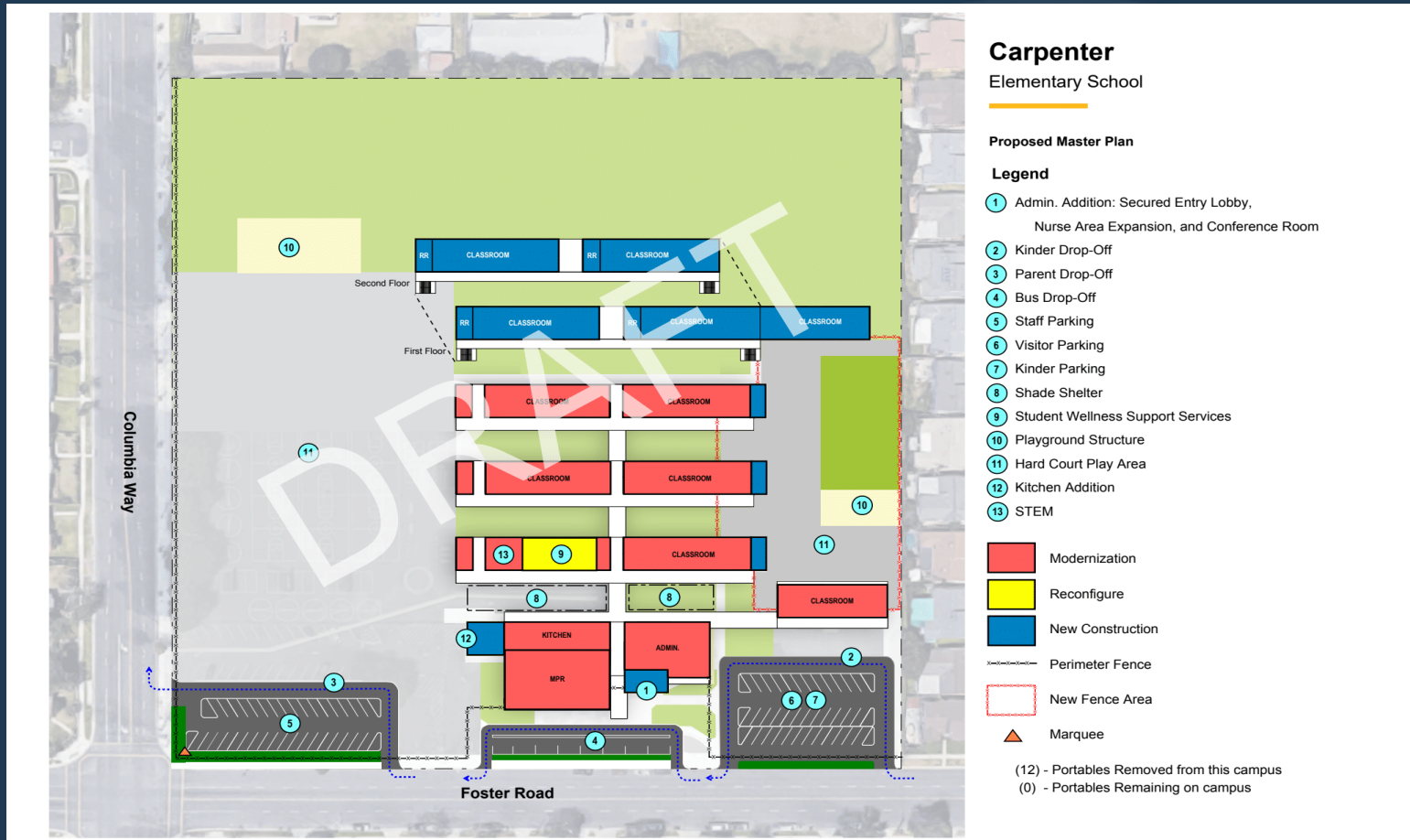


# Elementary Sites

- **Samples of:**
  - **Carpenter**
  - **Imperial**
  - **Rio Hondo**
  - **Rio San Gabriel**



# Carpenter Elementary





# Imperial Elementary



## Imperial Elementary School

### Proposed Master Plan

#### Legend

- ① Admin. Bldg.: Secured Entry Lobby, Nurse Area Expansion, and Conference Room
- ② Kinder Drop-Off
- ③ Parent Drop-Off
- ④ Bus Drop-Off
- ⑤ Staff Parking
- ⑥ Visitor Parking
- ⑦ Kinder Parking
- ⑧ Shade Shelter
- ⑨ Student Wellness Support Services
- ⑩ Playground Structure
- ⑪ Hard Court Play Area
- ⑫ Kitchen Addition
- ⑬ STEM

- Modernization
- Reconfigure
- New Construction
- Perimeter Fence
- New Fence Area
- Marquee

(18) - Portables Removed from this campus  
 (0) - Portables Remaining on campus



# Rio Hondo Elementary



## Rio San Gabriel Elementary School

### Proposed Master Plan

#### Legend

- ① Admin. Bldg.: Secured Entry Lobby, Nurse Area Expansion, and Conference Room
  - ② Kinder Drop-Off
  - ③ Parent Drop-Off
  - ④ Bus Drop-Off
  - ⑤ Staff Parking
  - ⑥ Visitor Parking
  - ⑦ Kinder Parking
  - ⑧ Shade Shelter
  - ⑨ Student Wellness Support Services
  - ⑩ Playground Structure
  - ⑪ Hard Court Play Area
  - ⑫ Kitchen Addition
  - ⑬ STEM
- 
- Modernization
  - Reconfigure
  - New Construction
  - Perimeter Fence
  - New Fence Area
  - Marquee
- (10) - Portables Removed from this campus  
 (0) - Portables Remaining on campus



# Rio San Gabriel Elementary



## Rio San Gabriel Elementary School

### Proposed Master Plan

#### Legend

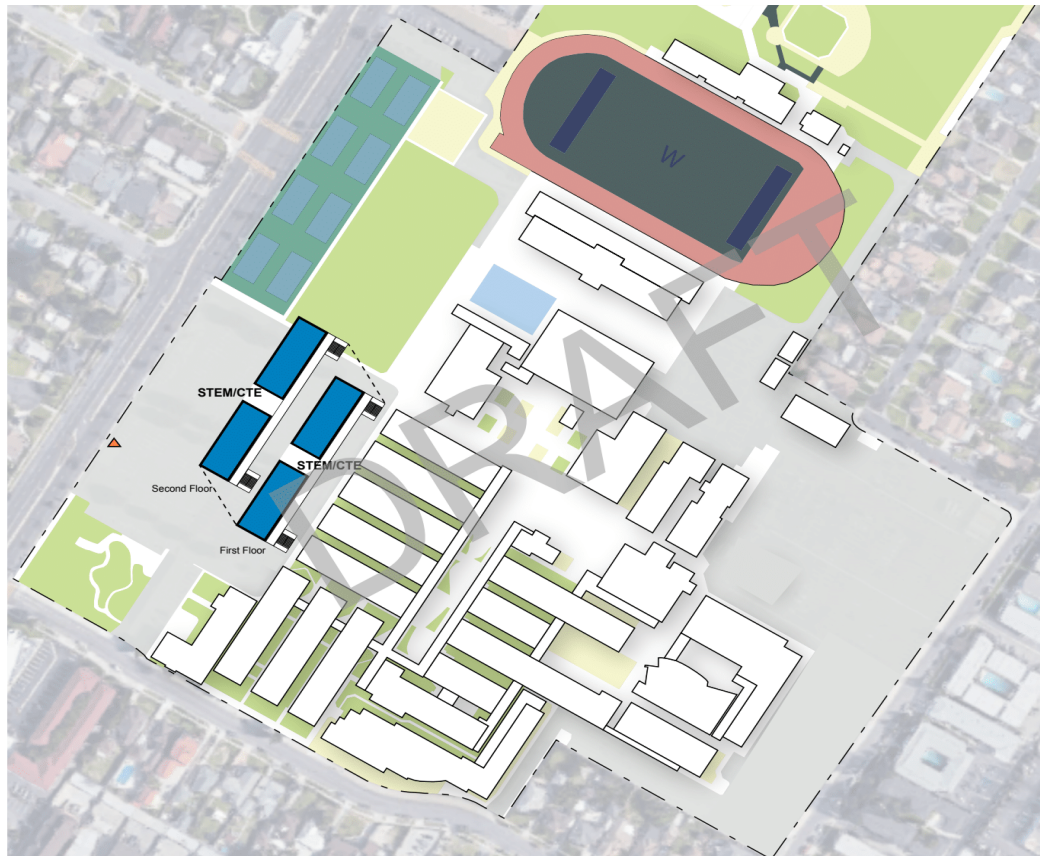
- ① Admin. Bldg.: Secured Entry Lobby, Nurse Area Expansion, and Conference Room
- ② Kinder Drop-Off
- ③ Parent Drop-Off
- ④ Bus Drop-Off
- ⑤ Staff Parking
- ⑥ Visitor Parking
- ⑦ Kinder Parking
- ⑧ Shade Shelter
- ⑨ Student Wellness Support Services
- ⑩ Playground Structure
- ⑪ Hard Court Play Area
- ⑫ Kitchen Addition
- ⑬ STEM

- Modernization
- Reconfigure
- New Construction
- Perimeter Fence
- New Fence Area
- Marquee

(10) - Portables Removed from this campus  
 (0) - Portables Remaining on campus



# Warren High School



## Warren High School

### Proposed Master Plan

#### Legend

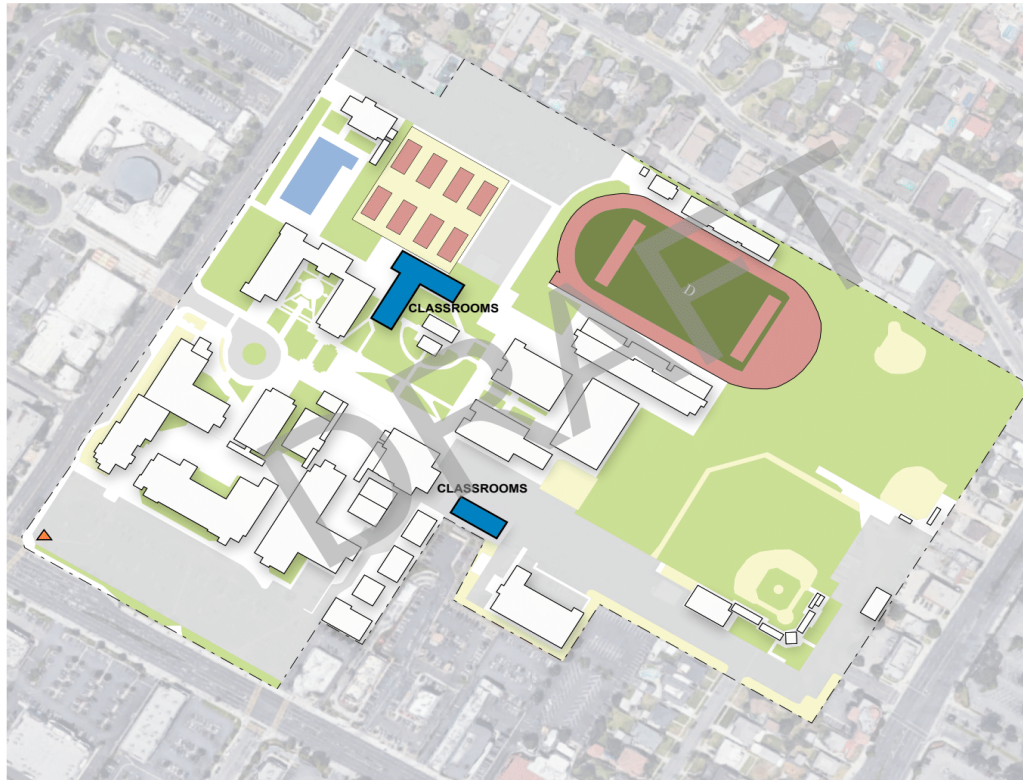
- ① Admin. Addition: Secured Entry Lobby, Nurse Area Expansion, and Conference Room
- ② Kinder Drop-Off
- ③ Parent Drop-Off
- ④ Bus Drop-Off
- ⑤ Staff Parking
- ⑥ Visitor Parking
- ⑦ Kinder Parking
- ⑧ Shade Shelter
- ⑨ Student Wellness Support Services
- ⑩ Playground Structure
- ⑪ Hard Court Play Area
- ⑫ Kitchen Addition
- ⑬ STEM

- Modernization
- Reconfigure
- New Construction
- Perimeter Fence
- New Fence Area
- Marquee

(12) - Portables Removed from this campus  
 (0) - Portables Remaining on campus



# Downey High School



## Downey High School

### Proposed Master Plan

#### Legend

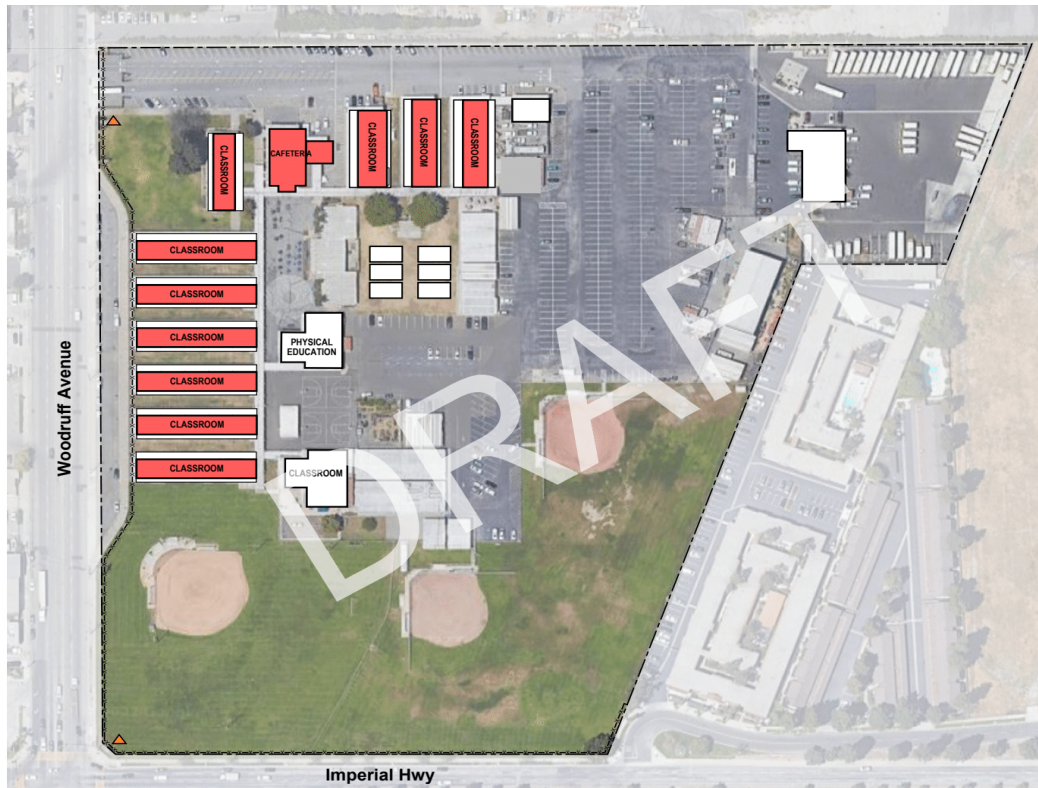
- 1 Admin. Addition: Secured Entry Lobby, Nurse Area Expansion, and Conference Room
- 2 Kinder Drop-Off
- 3 Parent Drop-Off
- 4 Bus Drop-Off
- 5 Staff Parking
- 6 Visitor Parking
- 7 Kinder Parking
- 8 Shade Shelter
- 9 Student Wellness Support Services
- 10 Playground Structure
- 11 Hard Court Play Area
- 12 Kitchen Addition
- 13 STEM

- Modernization
- Reconfigure
- New Construction
- Perimeter Fence
- New Fence Area
- Marquee

(14) - Portables Removed from this campus  
 (0) - Portables Remaining on campus



# Columbus High School Phase I



## Columbus High School

### Proposed Master Plan - Phase 1

#### Legend

- ① Admin. Addition: Secured Entry Lobby, Nurse Area Expansion, and Conference Room
- ② Kinder Drop-Off
- ③ Parent Drop-Off
- ④ Bus Drop-Off
- ⑤ Staff Parking
- ⑥ Visitor Parking
- ⑦ Kinder Parking
- ⑧ Shade Shelter
- ⑨ Student Wellness Support Services
- ⑩ Playground Structure
- ⑪ Hard Court Play Area
- ⑫ Kitchen Addition
- ⑬ STEM

- Modernization
- Reconfigure
- New Construction
- Perimeter Fence
- New Fence Area
- Marquee

- (0) - Portables Removed from this campus
- (21) - Portables Remaining on campus



# Columbus High School Phase II



## Columbus High School

### Proposed Master Plan - Phase 2

#### Legend

- 1 Admin. Addition: Secured Entry Lobby, Nurse Area Expansion, and Conference Room
- 2 Kinder Drop-Off
- 3 Parent Drop-Off
- 4 Bus Drop-Off
- 5 Staff Parking
- 6 Visitor Parking
- 7 Kinder Parking
- 8 Shade Shelter
- 9 Student Wellness Support Services
- 10 Playground Structure
- 11 Hard Court Play Area
- 12 Kitchen Addition
- 13 STEM

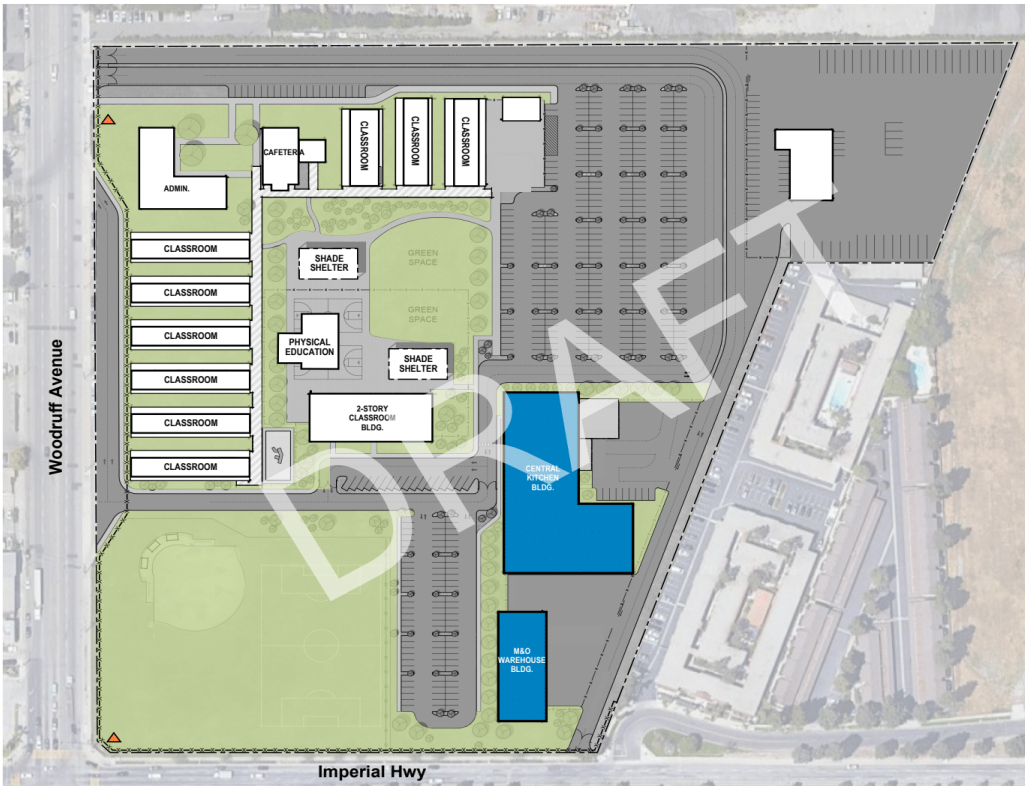
- Modernization
- Reconfigure
- New Construction
- Perimeter Fence
- New Fence Area
- ▲ Marquee

(21) - Portables Removed from this campus

(0) - Portables Remaining on campus



# Columbus High School Phase II



## Columbus High School

Proposed Master Plan - Phase 3

### Legend

- ① Admin. Addition: Secured Entry Lobby, Nurse Area Expansion, and Conference Room
  - ② Kinder Drop-Off
  - ③ Parent Drop-Off
  - ④ Bus Drop-Off
  - ⑤ Staff Parking
  - ⑥ Visitor Parking
  - ⑦ Kinder Parking
  - ⑧ Shade Shelter
  - ⑨ Student Wellness Support Services
  - ⑩ Playground Structure
  - ⑪ Hard Court Play Area
  - ⑫ Kitchen Addition
  - ⑬ STEM
- Modernization
  - Reconfigure
  - New Construction
  - Perimeter Fence
  - New Fence Area
  - Marquee



**Downey Unified**  
SCHOOL DISTRICT

# Draft Master Plan Update

## Next Steps

Our Kids Deserve  
The *Best*.



# Current Deferred Maintenance Projects





# Current Deferred Maintenance Projects

- **Carpenter ES – Asphalt Slurry/Striping**
- **Columbus HS – Campus Wide Exterior Painting & Building B and L Roofing Project**
- **District Office – Asphalt/Slurry Striping**
- **Downey High School – Football Field Synthetic Turf, Tennis Court Resurfacing, DHH Building (SELACO) Painting**
- **Imperial ES – Campus Wide Exterior Painting**
- **Old River ES – New Carpet throughout School**
- **Price ES – Asphalt Slurry/Striping**
- **Rio Hondo ES – Staff lounge Flooring**
- **Rio San Gabriel ES – Window Glazing**
- **Sussman MS – Cafeteria Gutter Project, Administration and Cafeteria Gutter Work, Interior Gym Touch Up and Exterior Trim Painting**
- **Ward ES – Asphalt Slurry/Striping**
- **Williams ES – Asphalt Slurry/Striping, Campus Wide Exterior Painting**



**Downey Unified**  
SCHOOL DISTRICT

**THANK YOU!**

Our Kids Deserve  
The *Best*.