



# Current Conditions Board Update

Dr. Wayne Shannon

Dr. Roger Brossmer



# State to consider revising school mask rules soon

Top health official says K-12 mandate will stay in place at least through Feb. 28.

California **will keep its indoor mask mandate** for K-12 schools in place at least through the end of the month, the state's top health official said Monday, even as it moves this week to relax face covering rules in other settings.

While other states have announced plans to relax their requirements in the near future, **California will reassess conditions Feb. 28** to see whether the promising trajectory of the COVID-19 pandemic continues, said Dr. Mark Ghaly, the state's health and human services secretary.



# California Health and Human Services Agency

CALIFORNIA COVID-19 REPSONSE

February 14, 2002

Secretary Mark Gahly, MD, MPH

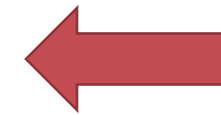


	January 14	February 14	Difference
<b>Cases</b> (7- day average by episode date)	93,046	22,875	↓ -75.4%
<b>Hospitalizations</b> (COVID-19 Positive)	13,776	8,189	↓ -40.6%
<b>Hospital Admissions</b> (COVID-19 Positive)	2,808	1,047	↓ -62.7%
<b>Test Positivity</b> (7- day average)	22.9%	6.2%	↓ -72.9%

# Current Hospitalizations in LA County

Date	Thurs 2/3	Fri 2/4	Sat 2/5	Sun 2/6	Mon 2/7	Tues 2/8	Wed 2/9
Hospitalizations	3,398	3,233	3,012	2,841	2773	2702	2,597

Date	Thurs 2/10	Fri 2/11	Sat 2/12	Sun 2/13	Mon 2/14	Tues 2/15	Wed 2/16*
Hospitalizations	2,464	2,307	2,211	2,086	2,054	1,995	1,835



**\*County Reached 7 Day  
Threshold on Wed 2/16**

Date	Thurs 2/17	Fri 2/18	Sat 2/19	Sun 2/20	Mon 2/21	Tues 2/22	Wed 2/23
Hospitalizations	1,713	1,616	1,502	1,391	1,310	1,276	





## County lifts its outdoor mask mandate

On Wednesday, state health officials will lift a requirement that all residents age 2 and older wear masks in most indoor public spaces. While the vast majority of California counties have said they will follow that guidance, some — Santa Clara and Mendocino, in addition to L.A. — will retain local universal indoor mask mandates, likely until at least next month.

Officials at Disneyland on Tuesday confirmed that the Anaheim resort will follow the state's guidelines by allowing vaccinated visitors to enter indoor eateries, stores and attractions without masks, starting Thursday. Unvaccinated visitors must wear a mask in those settings, but park employees will not be checking vaccination records, Disney representatives said. Knott's Berry Farm in Buena Park and Sea World in San Diego have also announced plans to follow the state guidelines regarding masks. Goldenvoice, organizer of the Coachella and Stagecoach festivals, said Tuesday that it will eliminate all COVID-19 safety precautions from this spring's events.



# COVID-19 UPDATES

February 15, 2022

Dear LA County Sector Partners,

The Los Angeles County Responding Together at Work and In the Community [Health Officer Order](#) has been updated. Changes are highlighted in yellow on the document:

On February 16, 2022, the attendance thresholds at Mega Events are returned to 1,000 attendees for Indoor Mega Events and 10,000 attendees for Outdoor Mega Events.

This Order recommends, but no longer requires, masking for attendees at Outdoor Mega Events.

This Order no longer requires masking while outdoors at K-12 Schools, Youth Sports, or Childcare settings. Masking is still recommended at crowded outdoor events.





**RESPONDING TOGETHER AT WORK AND IN THE COMMUNITY**  
BEYOND THE BLUEPRINT FOR A SAFER ECONOMY, **POST WINTER SURGE,**  
**HIGH TRANSMISSION—ENCOURAGING COVID-19 VACCINATION AND BOOSTER DOSE**  
**COVERAGE WITH RISK REDUCTION MEASURES**

**Issue Date: Tuesday, February 15, 2022**

**Effective at 12:01am on Wednesday, February 16, 2022\***

\*Updated definitions for mega events effective as of **2/16/2022**

**Brief Highlights (Changes highlighted in yellow):**

**2/15/2022:**

- On February 16, 2022, the attendance thresholds at Mega Events are returned to 1,000 attendees for Indoor Mega Events and 10,000 attendees for Outdoor Mega Events.
- This Order recommends, but no longer requires, masking for attendees at Outdoor Mega Events.
- This Order no longer requires masking while outdoors at K-12 Schools, Youth Sports, or Childcare settings. Masking is still recommended at crowded outdoor events.



# Reopening Protocols for K-12 Schools: Appendix T1



COUNTY OF LOS ANGELES DEPARTMENT OF PUBLIC HEALTH  
ORDER OF THE HEALTH OFFICER



## Reopening Protocols for K-12 Schools: Appendix T1

**Recent Updates** (Changes highlighted in yellow)

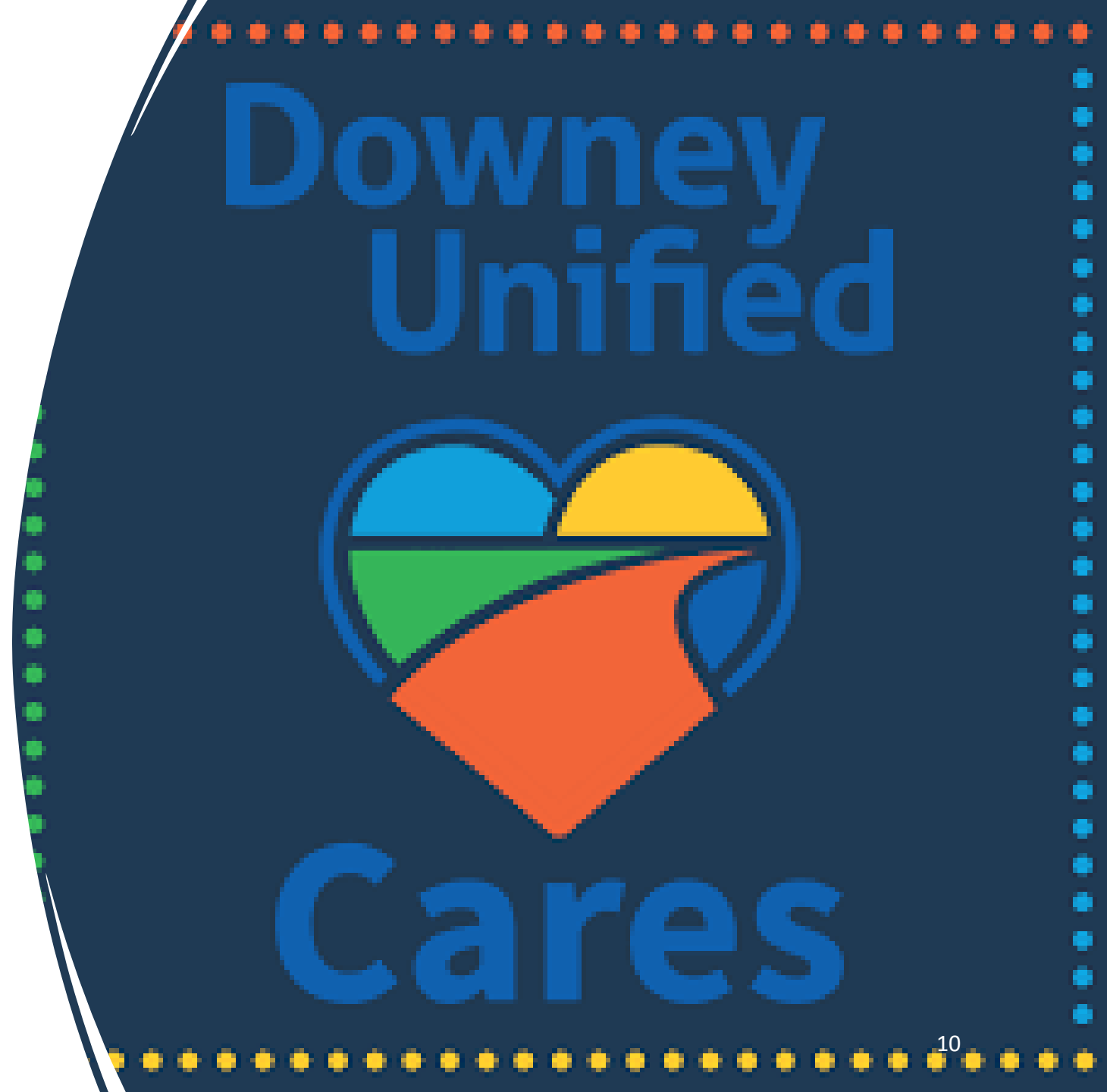
**2/17/22**

- Outdoor masking strongly recommended but not required in crowded settings when physical distancing cannot be easily or reliably maintained.
- Changes in upgraded mask information for students including cloth (reusable) mask guidance.
- Attendance thresholds return to pre-surge levels for both outdoor Mega events (10,000 attendees) and indoor Mega Events (1,000 attendees).
- Clarification on what constitutes acceptable documentation for a mask exemption.
- Revisions to performing arts section to incorporate lifting of outdoor mask requirements.

# DUSD – Outdoor Masking Mandate

---

**Staff Recommendation:** To allow families to decide whether they expect child/ren to wear a mask during outdoor activities (e.g., recess, snack or lunch)



## Reopening Protocols for K-12 Schools: Appendix T1 – Cont.

- It is strongly recommended but not required that staff also wear masks outdoors on school campuses when in crowded settings where distancing cannot be easily and reliably maintained.
- However, universal masking with some appropriate type of face covering is still currently required when indoors except when actively eating or drinking. It is strongly recommended but not required that students also wear masks outdoors when in crowded settings where distancing cannot be easily and reliably maintained.
- All students 2 years of age and older are required to wear face masks at all times while indoors on school property except while eating, drinking, or carrying out other activities that preclude use of face masks.
- It is strongly recommended but not required that all students 2 years of age and older also wear masks while outdoors on campus when in crowded settings, and in other outdoor spaces where distancing is not possible or practical.





## Protocol for Organized Youth Sports: Appendix S

**Recent updates:** (Any changes are highlighted in yellow)

**2/17/22**

- Outdoor masking is no longer required but still recommended at crowded events where distancing is not possible, and for participants in moderate-risk and high-risk sports.
- Attendance thresholds at Mega Events are returned to 1,000 attendees for Indoor Mega Events and 10,000 attendees for Outdoor Mega Events.

# Protocol for Organized Youth Sports:

## Appendix S – Cont.

- **When INDOORS, require all participants**, regardless of vaccination status, to bring and wear masks. Masks are required to be always worn indoors when participants are not actively practicing, conditioning, competing, or performing. Masks are also required indoors while on the sidelines, in team meetings, and within locker rooms and weight rooms. When actively practicing, conditioning, or competing in indoor sports, masks are required by participants even during heavy exertion, as practicable.
- **When participating in OUTDOOR sports, masks are recommended but not required** when on the sidelines in close contact with other team members or staff. When actively practicing, conditioning, competing or performing in outdoor moderate-risk and high-risk sports, masking is recommended, but not required, even during heavy exertion, as practicable.

