



Mathematics



THIS CRITERION ASSESSES YOUR ABILITY TO...

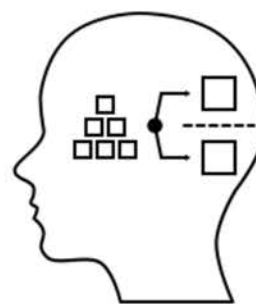
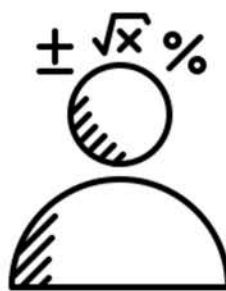
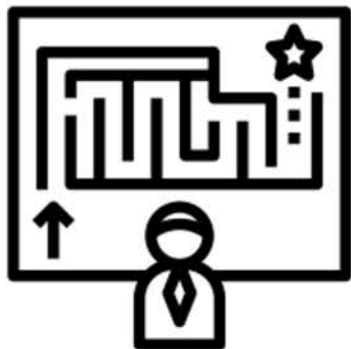
CRITERION A

Knowing &
Understanding



i. Select appropriate
mathematics when solving
problems in both familiar and
unfamiliar situations

ii. Apply the
selected
mathematics
when solving
problems



iii. Solve problems
correctly in a variety of
contexts



Mathematics



THIS CRITERION ASSESSES YOUR ABILITY TO...

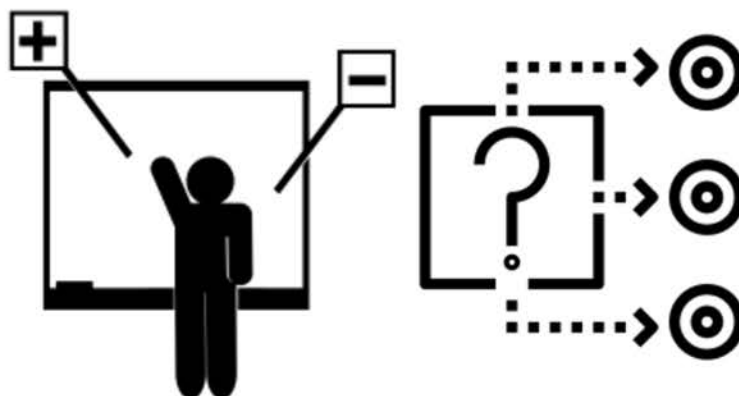
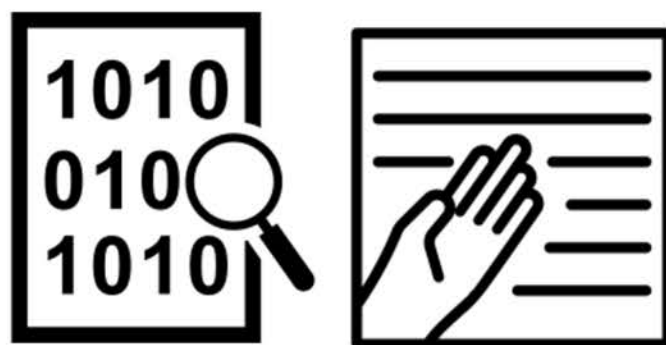
CRITERION B

Investigating
Patterns



i. Select & apply mathematical
problem solving techniques to
discover complex patterns

ii. Describe patterns
as general rules
consistent with
findings



iii. Prove, or verify & justify
general rules



Mathematics



THIS CRITERION ASSESSES YOUR ABILITY TO...

CRITERION C

Communicating



i. Use appropriate mathematical language

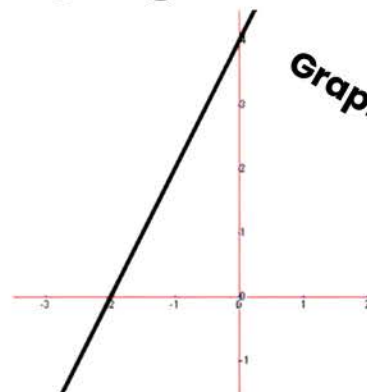
Symbolic

$$y = 2x$$

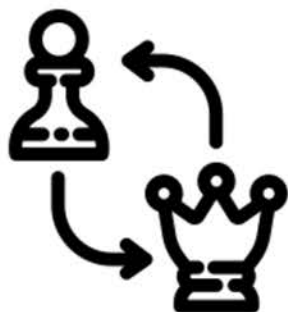
Numeric

x	$y = 2x + 4$
-3	-2
-2	0
-1	2
0	4

Graphic



ii. Use appropriate forms of mathematical representation



iii. Move between different forms of mathematical representation



iv. Communicate complete, coherent, & concise mathematical lines of reasoning



v. Organize information using a logical structure



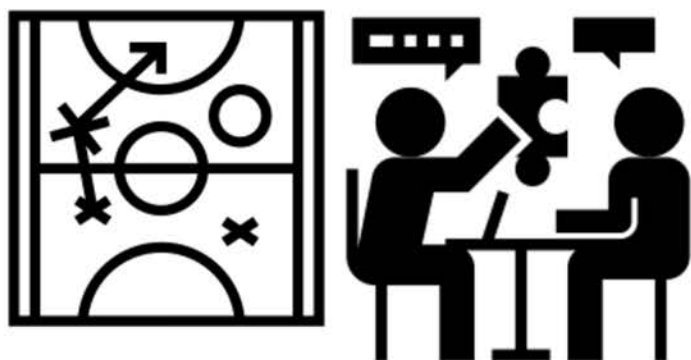
Mathematics



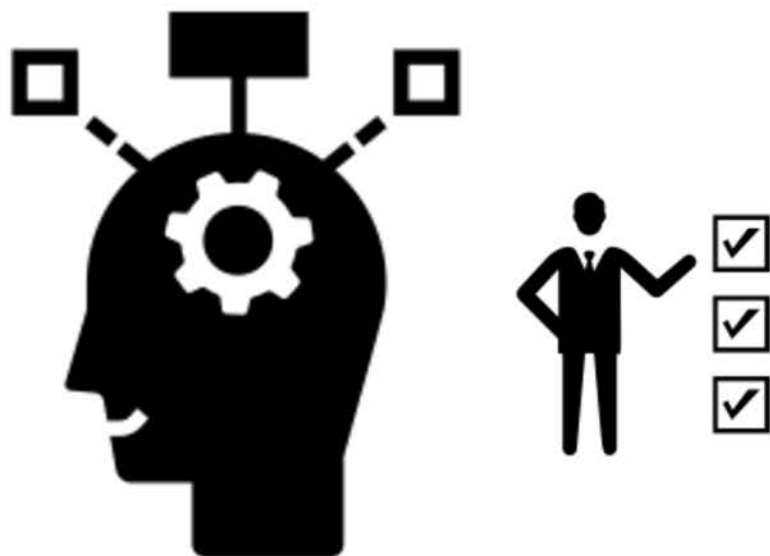
THIS CRITERION ASSESSES YOUR ABILITY TO...

CRITERION D

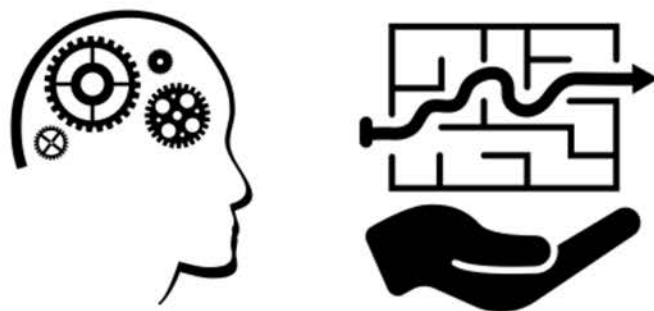
Applying
Mathematics in real-
Life Contexts



ii. select appropriate
mathematical strategies
when solving authentic
real-life situations



i. Identify relevant elements of
authentic real-life situations



iii. Apply the selected
mathematical strategies
successfully to reach a
solution

iv. Justify the degree of accuracy
of a solution

v. Justify whether a solution
makes sense in the context of the
authentic real-life situation